

T16N

T15N

T14N

T13N

T12N

T11N

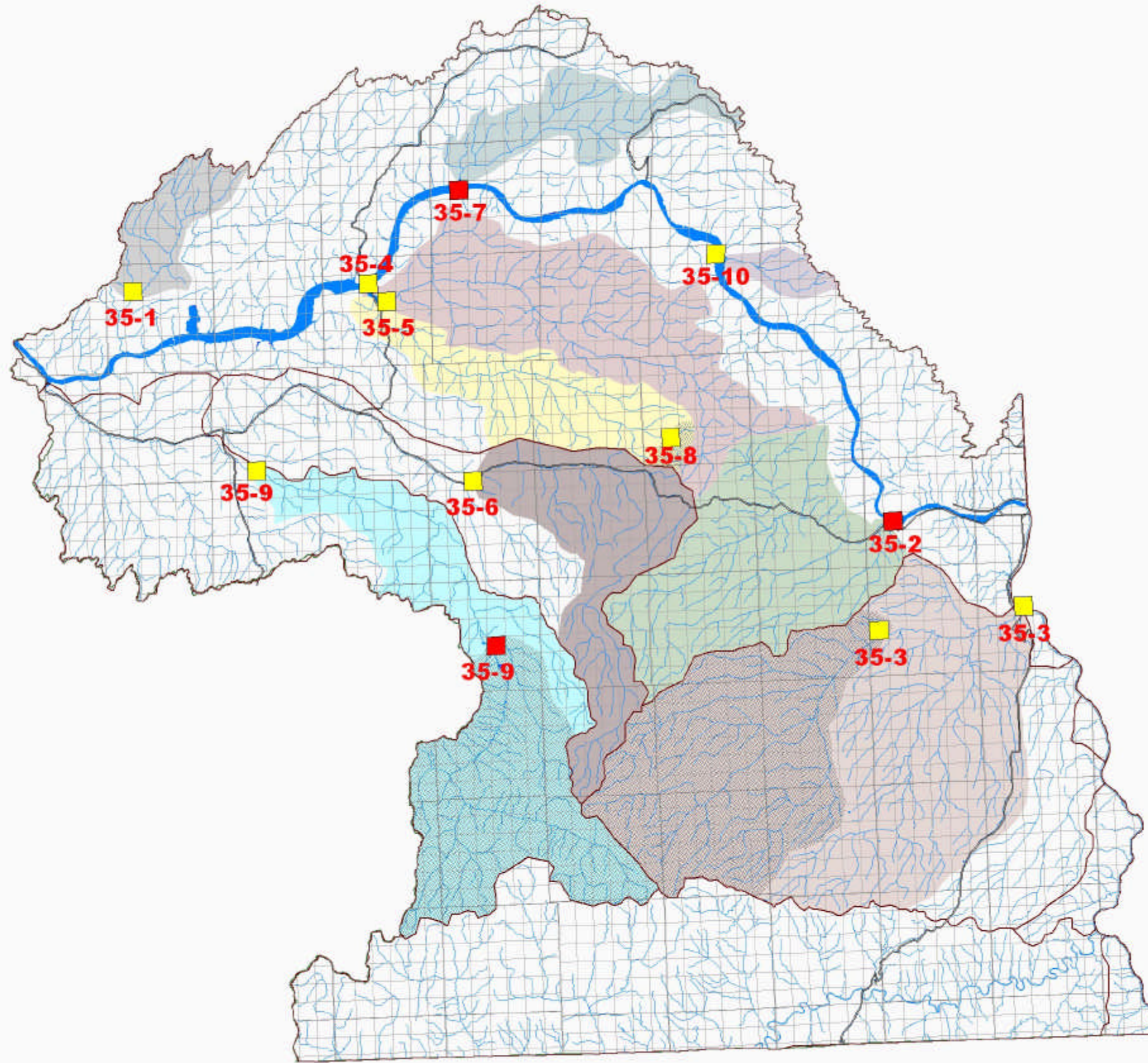
T10N

T9N

T8N

T7N

T6N



Washington State

WRIA 35



3 0 3 6 Miles

EXHIBIT A
 WRIA 35
 Existing Administrative Low Flows
 and Closures

March 2004

ees Economic and Engineering
 Services, Inc.
10000 10TH AVENUE, SUITE 1000, SEASIDE, WA 98138

WRIA 35 Existing Administrative Low Flows and Closures

<i>Map Key</i>	<i>Stream Name</i>	<i>Type</i>	<i>Location</i>	<i>Documentation Basis</i>
35-1	Alkali Flat Creek	Low Flow - .05 cfs	13 N 38 E S 08	Letter from Fisheries, Oct. 28, 1955; Nov. 15, 1957; Apr. 18, 1952 - Letter from Game, Apr. 24, 1952; Dec. 15, 1971; Mar. 29, 1971 5899 (appl. 8661).
35-2	Alpowa Creek	Closure/Adjudication	11 N 45 E S 20	Adjudication Decree, Mar. 26, 1923
35-3	Asotin Creek	Low Flow	10 N 45 E S 19	Letter from Fisheries, Dec. 11, 1956; June 26, 1969; 10 cfs @ T10N, R. 45 E, Sect. 19
		Low Flow	10 N 46 E S 16	70 cfs @ T10N, R. 46E, Sec. 16, Apr. 1 to June 30; 15 cfs @ T10N, R. 46E, Sec. 16, July 1 to Mar 31
35-4	Deadman Creek	Adjudication	13 N 40 E S 09	Adjudication Decree, Jan. 24, 1929
35-5	Meadow Gulch Creek	Adjudication	13 N 40 E S 15	Adjudication Decree, June 6, 1922
35-6	Pataha Creek	Low Flow 10 cfs	11 N 41 E S 04	Letter from Game, Oct. 29, 1968
35-7	Penawawa Creek	Closure	14 N 41 E S 17	Letter from Fisheries, June 17, 1952; Closure initiated June 17, 1952; Closure lifted Feb. 14, 1963 - Letter from Game, May 17, 1962; Feb. 14, 1963
35-8	South Meadow Creek	Bypass Flow	12 N 43 E S 29	Letter from Fisheries, Aug. 12, 1952 - Bypass sufficient water for stock grazing

<i>Map Key</i>	<i>Stream Name</i>	<i>Type</i>	<i>Location</i>	<i>Documentation Basis</i>
35-9	Tucannon River	Closure	10 N 41 E S 22	Letter from Fisheries, Dec. 12, 1972; Oct. 28, 1974
		Low Flow - 50 cfs	12 N 39 E S 33	Letter from Fisheries, Dec. 12, 1972; Oct. 28, 1974
35-10	WaWaWai Caynon	Adjudication	13 N 43 E S 03	Adjudication Decree Mar 3, 1931