

Table 1 Asotin Creek Flow Measurements (cfs)

Site name	10/12/2005	12/15/2005	2/22/2006
AS-S1	24.07		27.39
AS-S2	22.14		24.31
LC-S1	20.31	17.17	
LC-S2	20.31	19.64	

Note: All units in cfs

Table 2 Asotin Creek Staff Gage Surface Water Level Measurements

	10/12/2005	02/22/2006
Site name	Level (fasl)	Level (fasl)
AS-S1	1872.29	1872.34
AS-S2	1839.92	1839.98
LC-S1	1951.03	1951.63
LC-S2	1932.76	1932.89

Table 3 Groundwater Level Measurements

	10/13/2005	02/22/2006
Site name	Level (fasl)	Level (fasl)
AS-W1	1840.73	1840.66
AS-W2	1846.72	1847.78
AS-W3	1855.34	1855.32
LC-W1	1934.05	1934.31
LC-W2	1938.52	1939.19
LC-W3	1945.46	1946.21

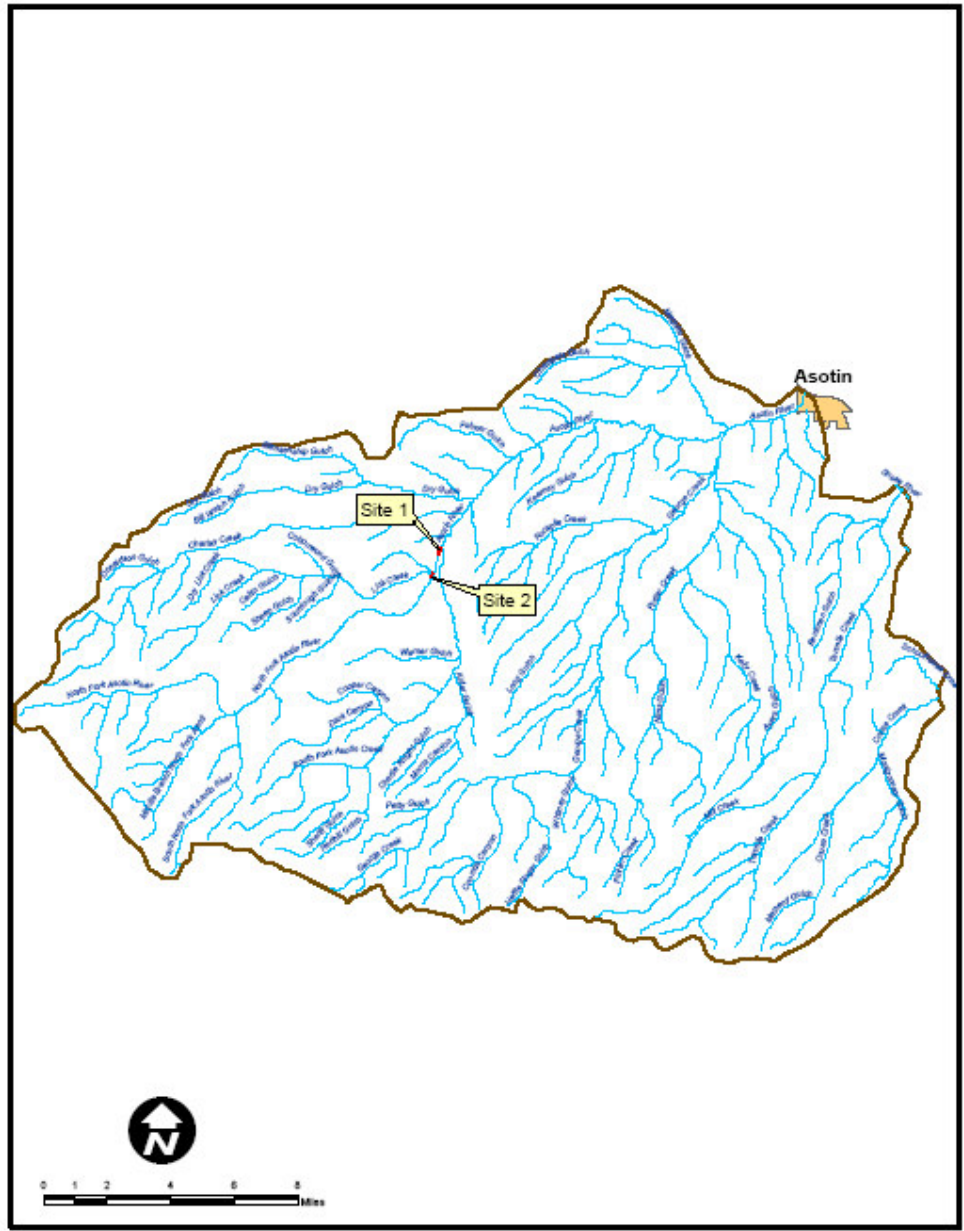


Figure 1 Location of Asotin Creek wetland-water storage sites (Site 1- S. Fork/N. Fork Confluence, Site 2- Lick Creek)

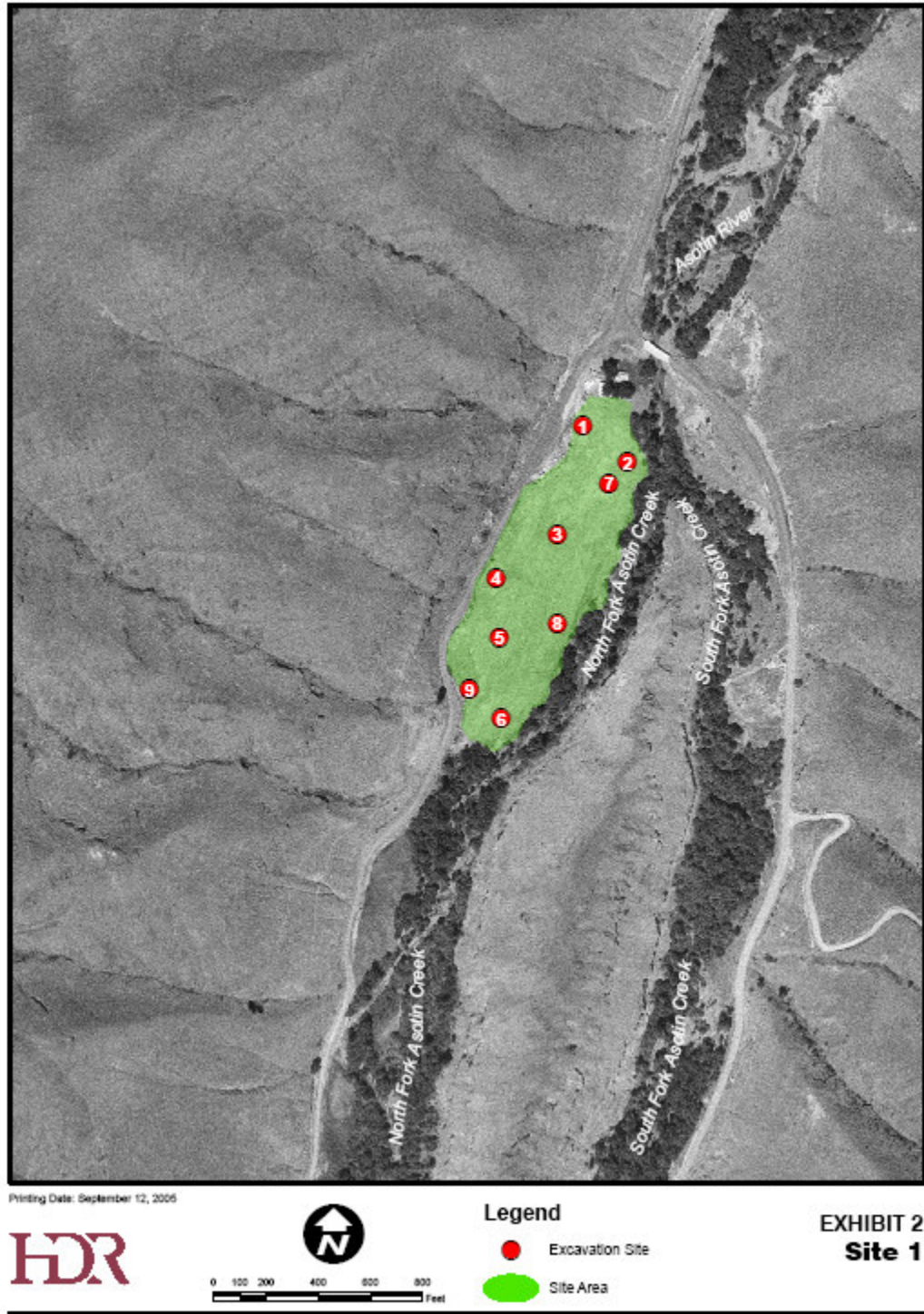


Figure 2 Aerial photograph of Site 1- S. Fork/N. Fork Confluence

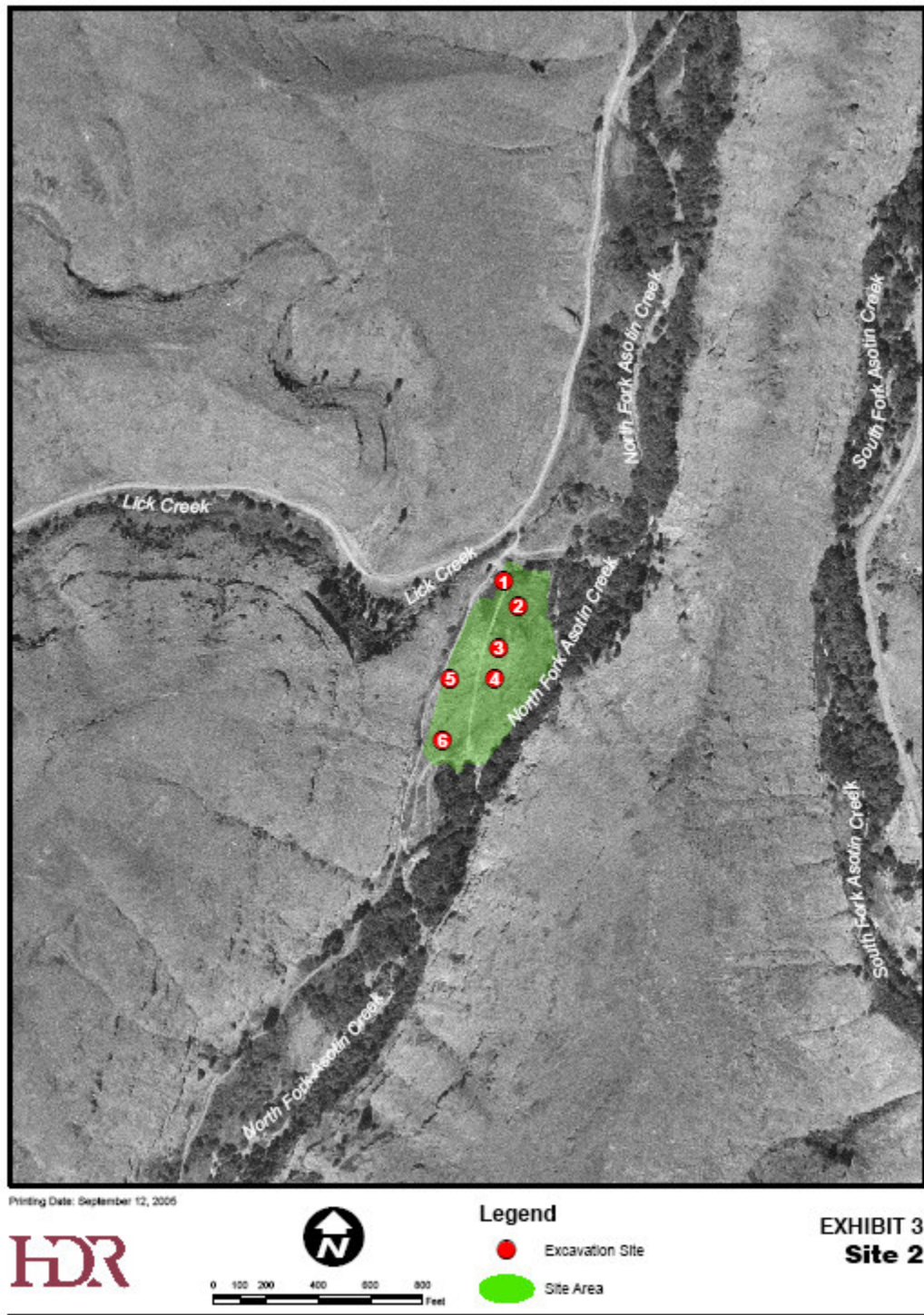


Figure 3 Aerial photograph of Site 1- Lick Creek Site

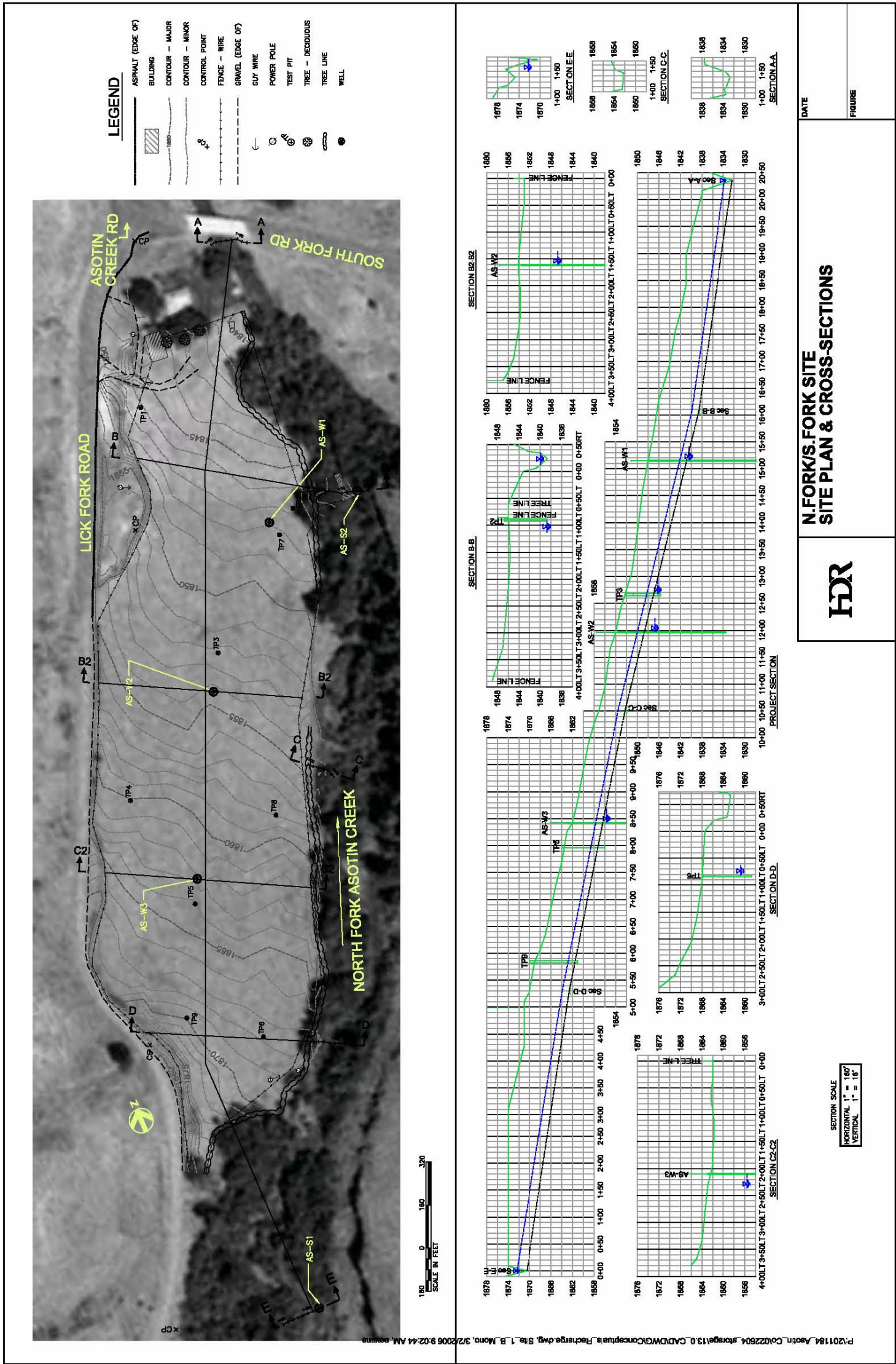


Figure 4 Site plan, topography and cross-sections for Site 1 - N. Fork/ S. Fork Site

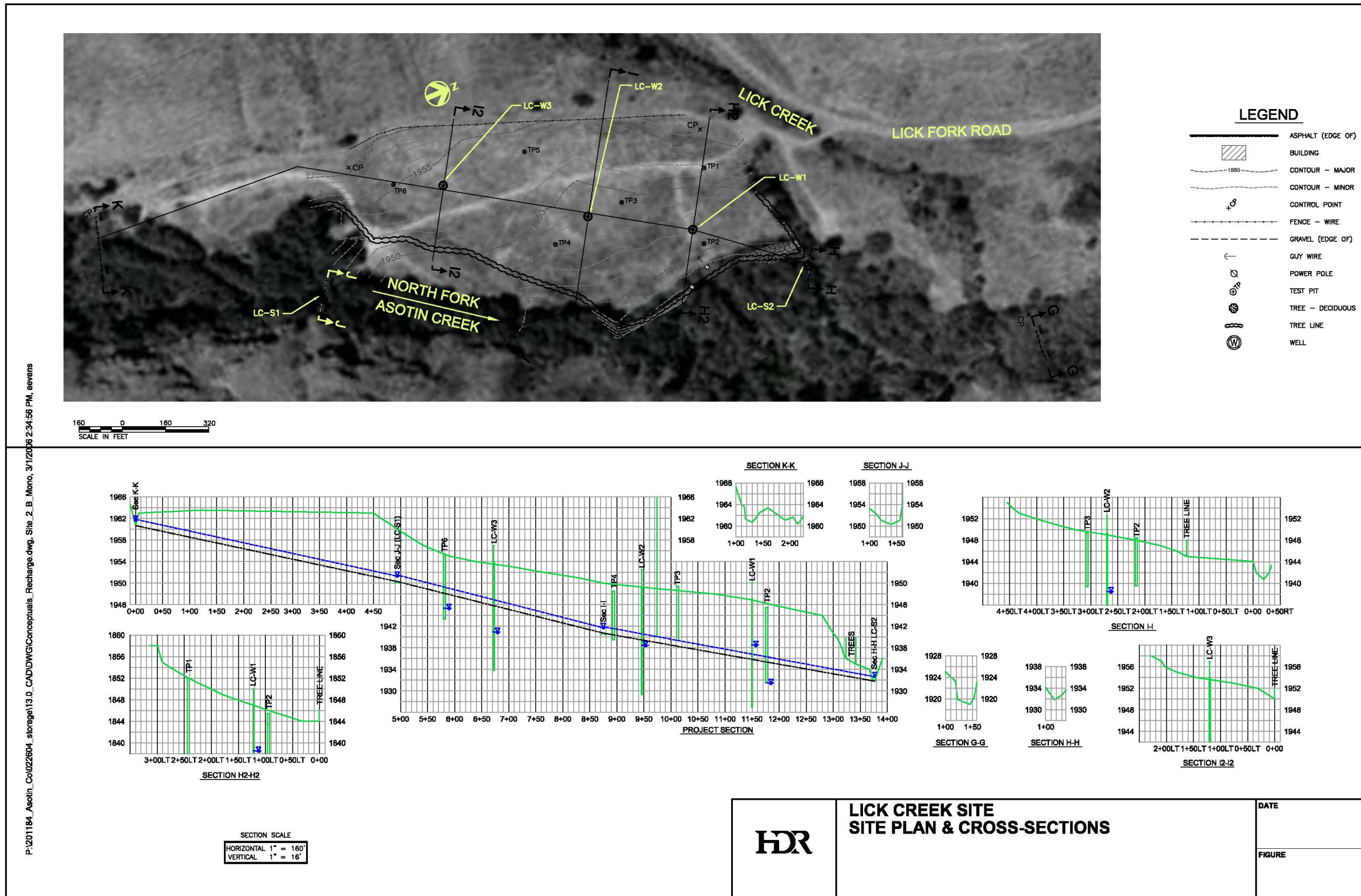


Figure 5 Site plan, topography and cross-sections for Site 2- Lick Creek Site



Figure 6 Photos of the S.Fork/N.Fork wetland-water storage site. Upper photo is from the eastern portion of the property looking west and lower photo is from the western portion of the property looking east.



Figure 7 Photos of the Lick Creek wetland-water storage site. Upper photo is the eastern portion of the property and lower photo is the western portion of the property.

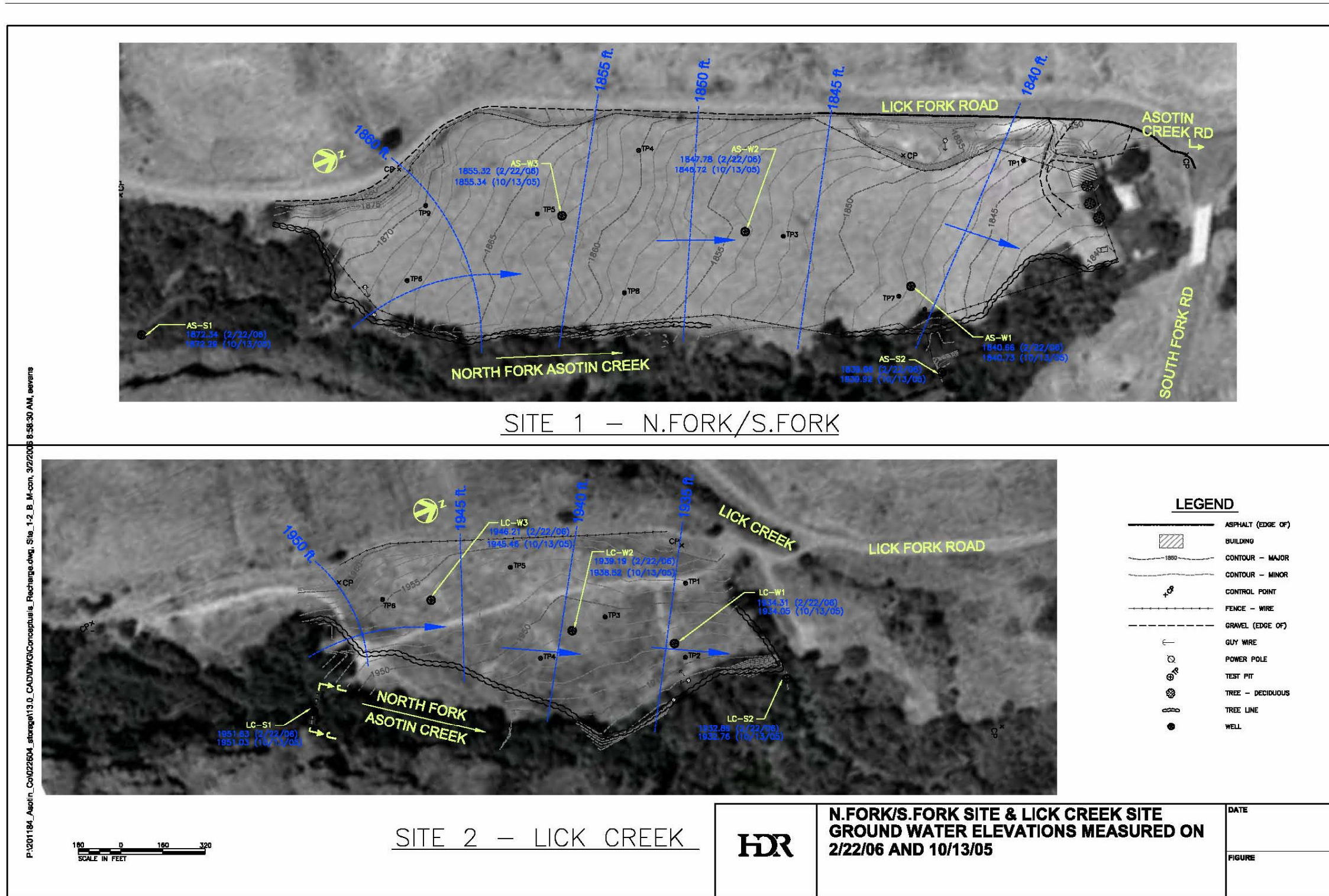


Figure 8 Ground water levels and Asotin Creek surface water stage at both wetland-water storage sites (all values in elevation above msl)

South Fork / North Fork Water Levels

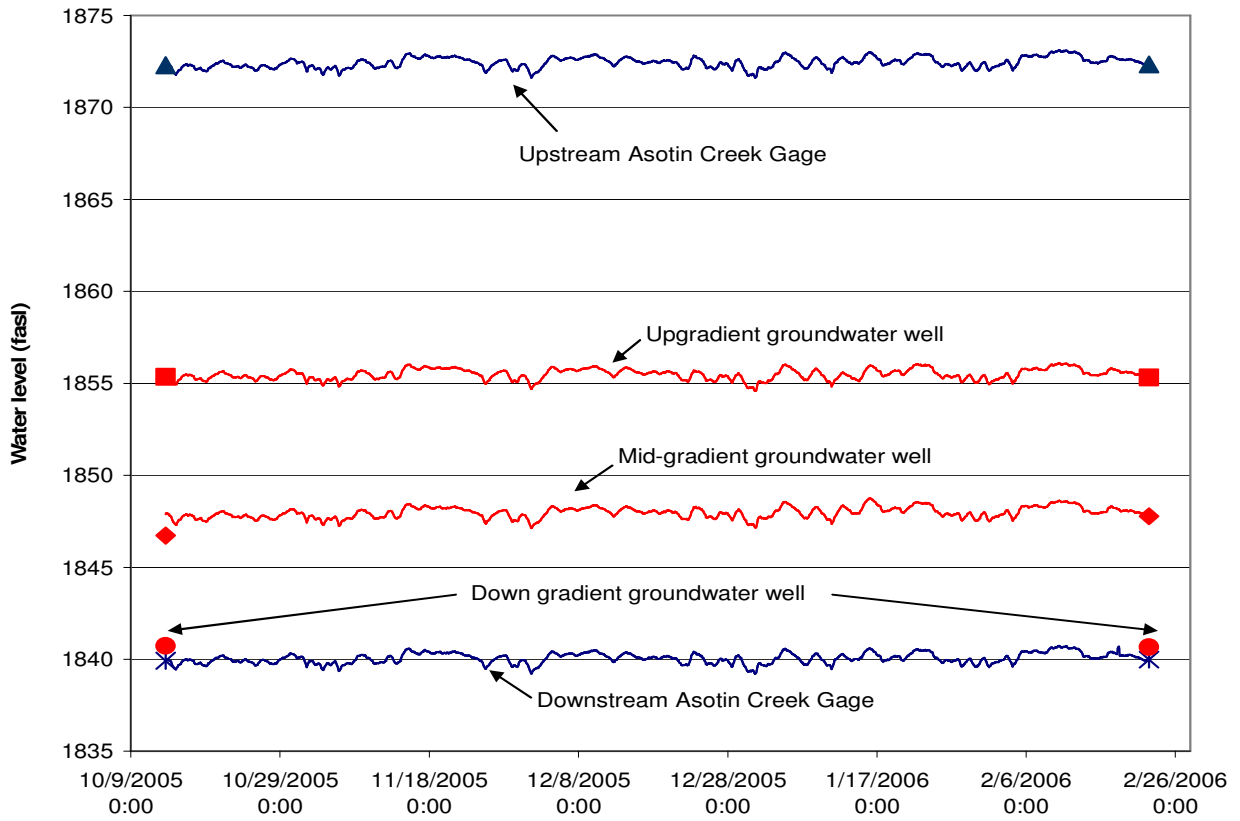


Figure 9 Groundwater and Surface Water Levels at Site 1

Lick Creek Water Levels

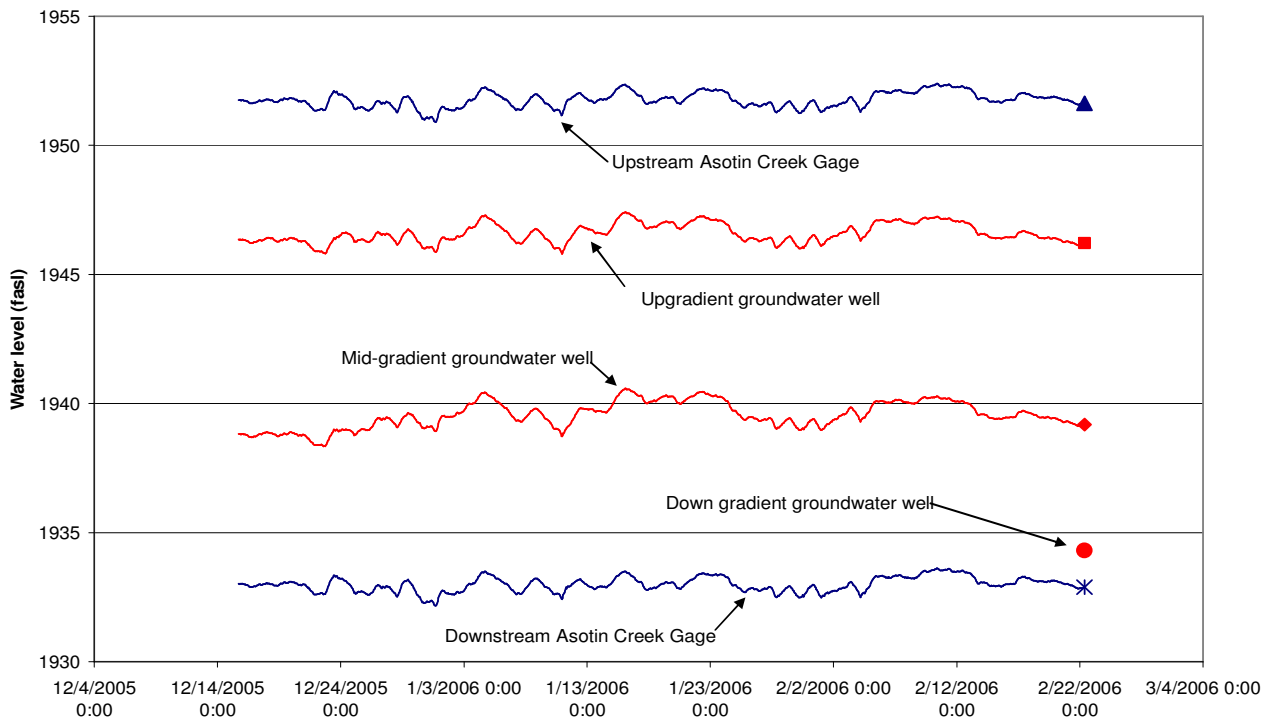
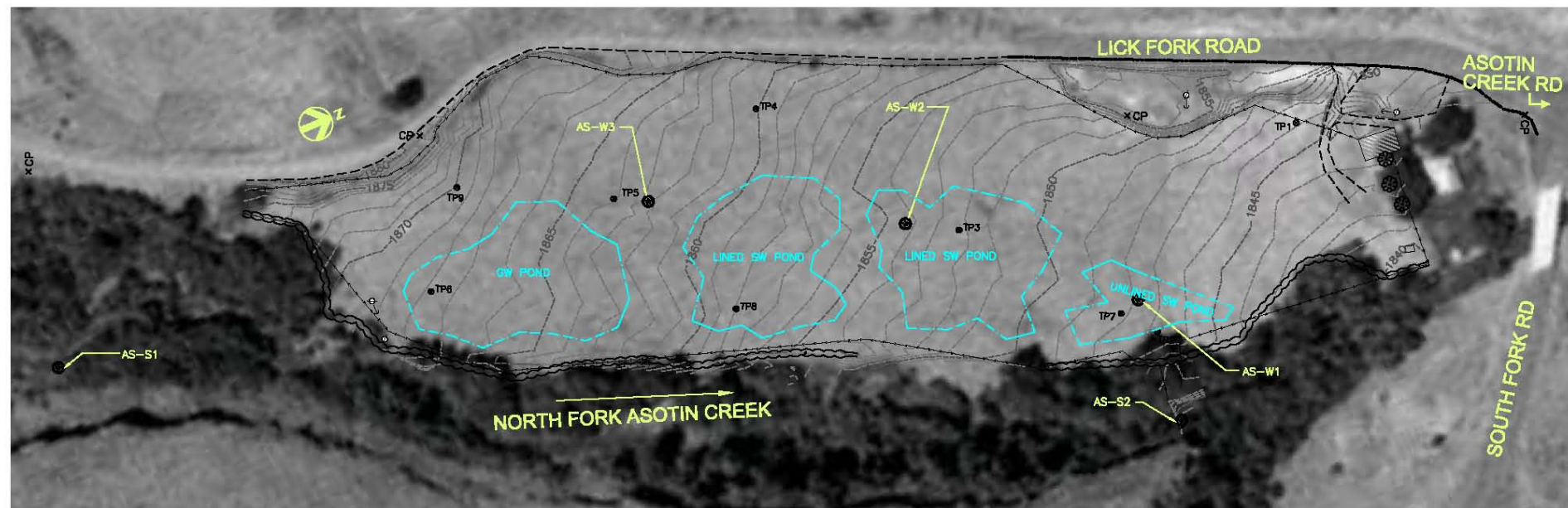
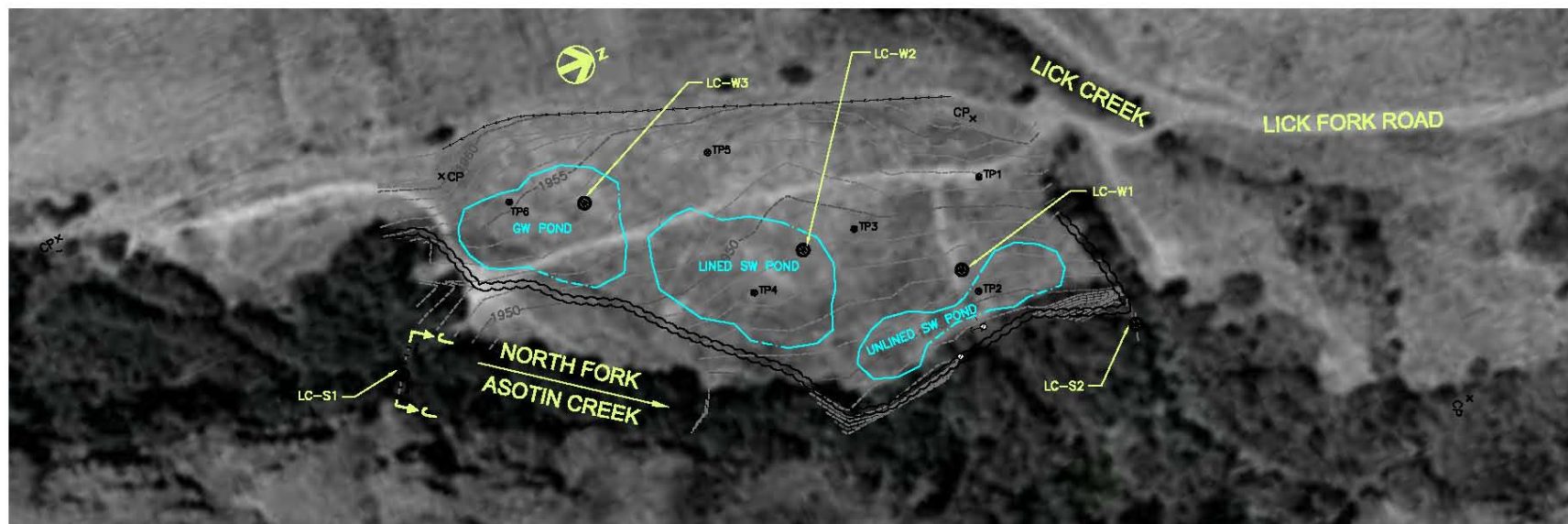


Figure 10 Groundwater and Surface Water Levels at Si



SITE 1 – N.FORK/S.FORK



SITE 2 – LICK CREEK

LEGEND

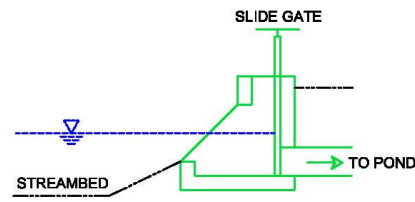
	ASPHALT (EDGE OF)
	BUILDING
	CONTOUR – MAJOR
	CONTOUR – MINOR
	CONTROL POINT
	FENCE – WIRE
	GRAVEL (EDGE OF)
	GUY WIRE
	POWER POLE
	TEST PIT
	TREE – DECIDUOUS
	TREE LINE
	WELL



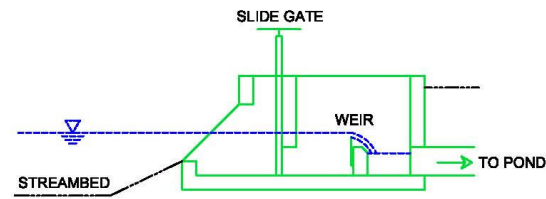
HDR	N.FORK/S.FORK SITE & LICK CREEK SITE CONCEPTUAL POND LAYOUT	DATE
		FIGURE

Figure 11 Conceptual wetland pond layout

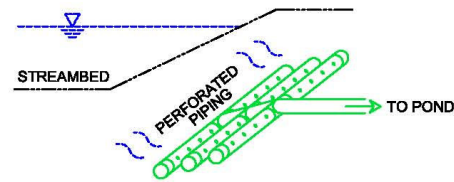
GRAVITY DIVERSIONS



DIRECT GRAVITY

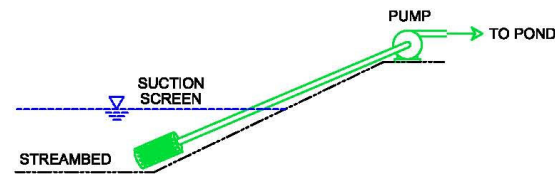


GRAVITY - MEASURED

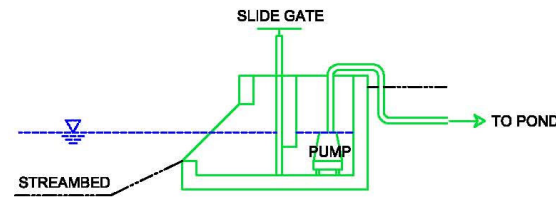


INFILTRATION GALLERY

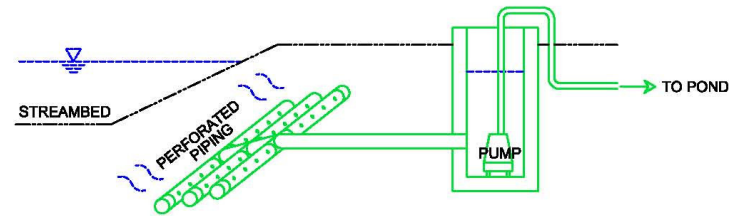
PUMPED DIVERSIONS



DIRECT PUMP

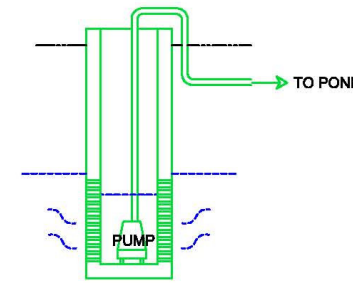


DIVERSION TO PUMP



INFILTRATION TO PUMP

AQUIFER DIVERSIONS



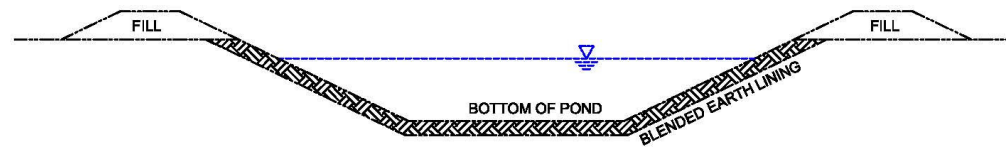
GROUNDWATER PUMP

P:\201184_Asoin_Col022604_storage\13.0_CAD\DWG\Conceptuals_Recharge.dwg, diversion-alternatives, 3/17/2006 2:49:06 PM, aevans

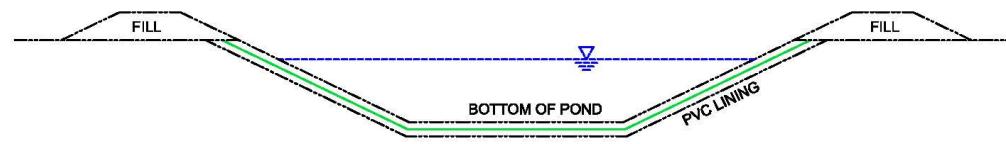
HDR	WATER DIVERSION ALTERNATIVES	DATE
		FIGURE

Figure 12 Conceptual wetland pond diversion alternative

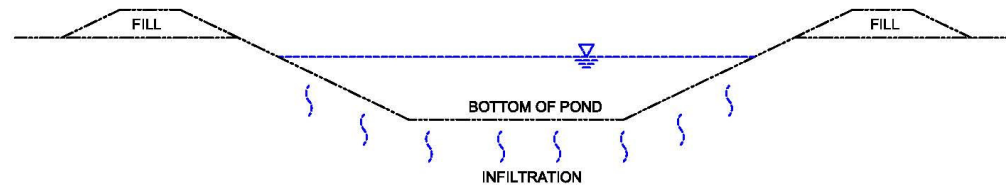
POND ALTERNATIVES



EARTH LINED POND



PVC LINED POND



UNLINED POND



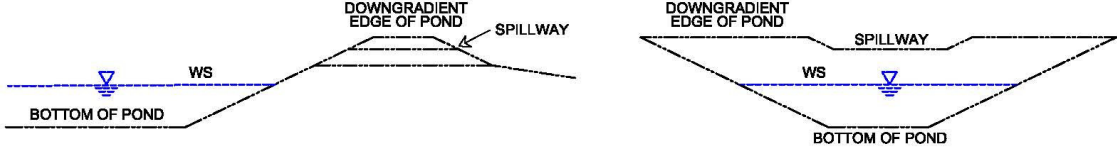
GROUNDWATER POND

P:\201184_Ascotin_Co\022804_storage\13_0_CAD\DWG\Conceptuals_Recharge.dwg, pond-alternatives, 3/1/2006 3:05:42 PM, eevens

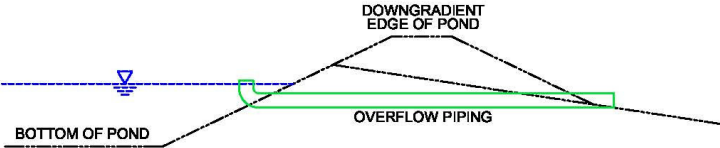
HDR	WETLAND POND TYPE ALTERNATIVES	DATE
		FIGURE

Figure 13 Conceptual wetland pond type alternatives

SPILLWAY ALTERNATIVES



OPEN CHANNEL



PIPELINE

P:\201184_Asoin_Co\022604_storage\13.0_CADD\WG\Conceptuals_Recharge.dwg, spillway-alternatives, 3/1/2006 2:50:13 PM, aevens

HDR	SPILLWAY ALTERNATIVES	DATE
		FIGURE

Figure 14 Conceptual wetland pond spillway alternatives