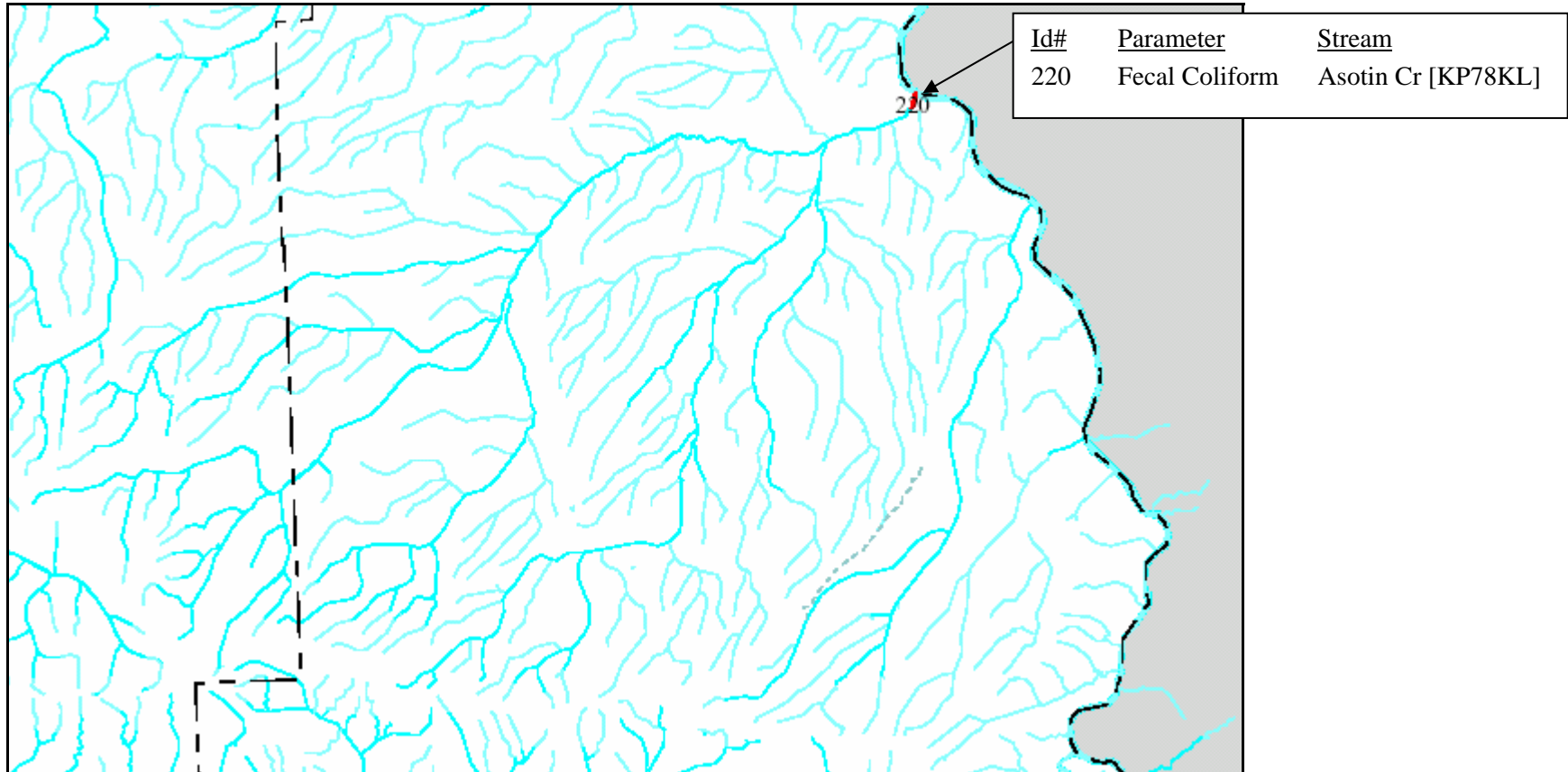
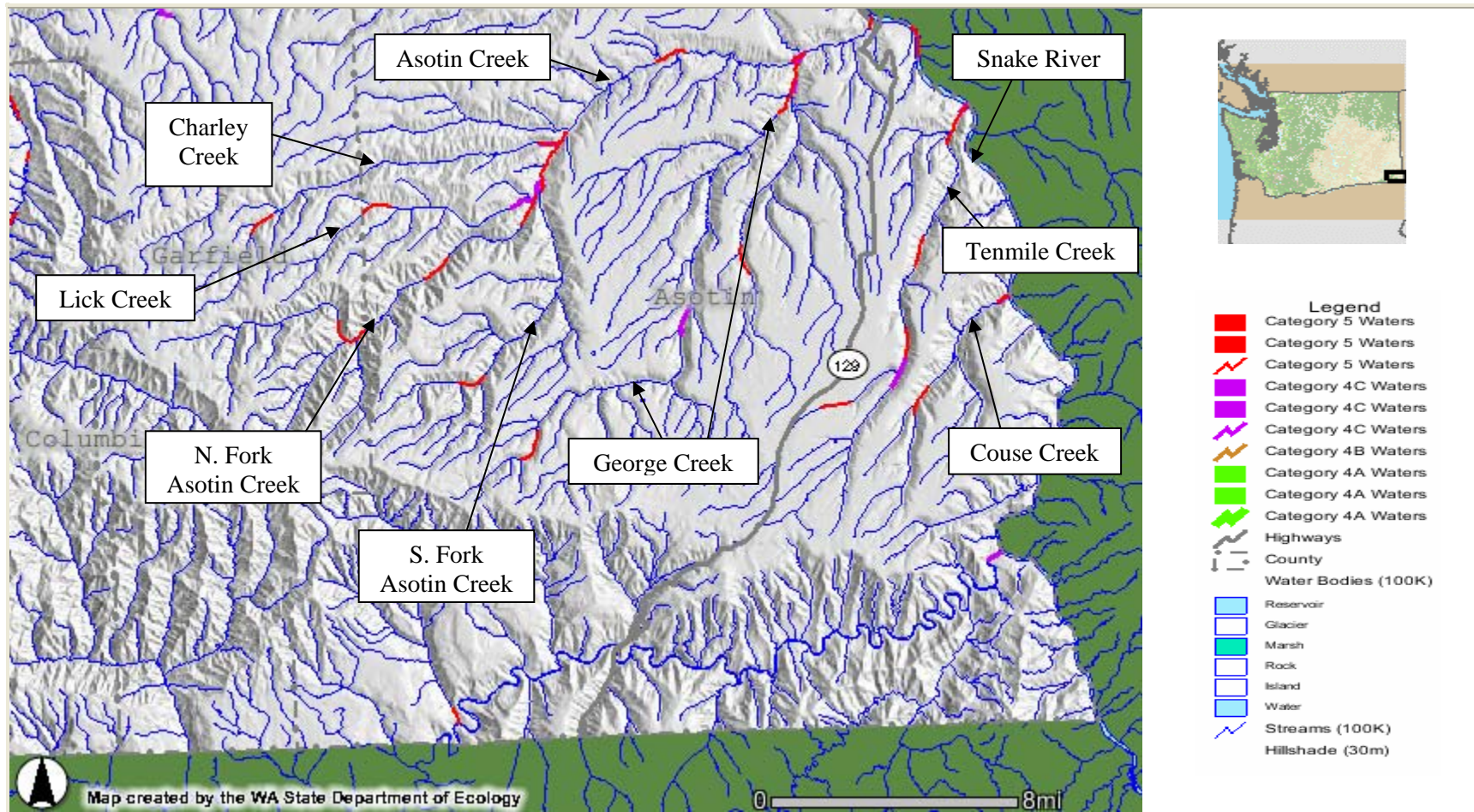


Exhibit 3.5-1
1998 303(d) Listed Stream Segments: Asotin Implementation Area



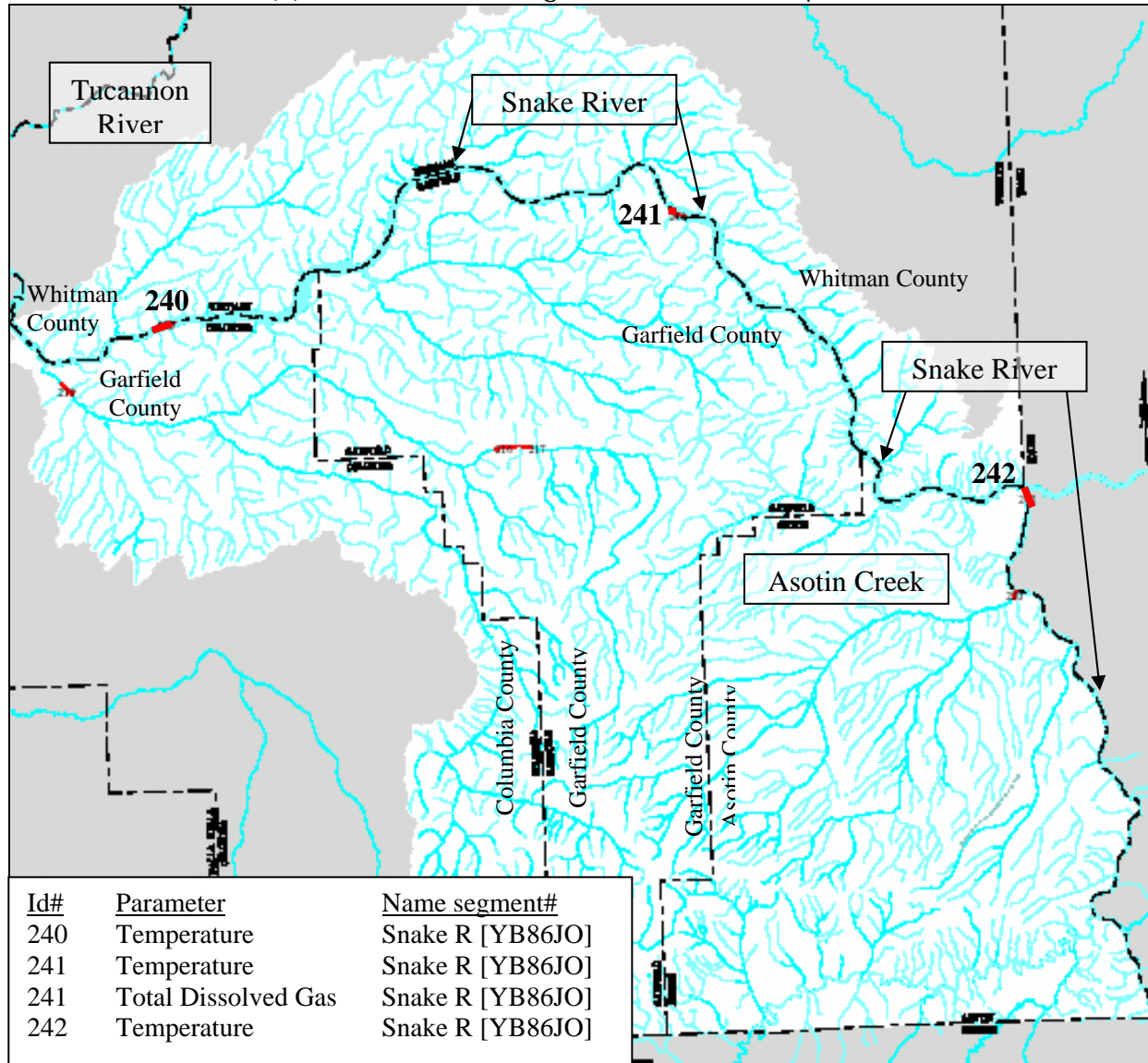
Source: Ecology, 2004. WRIA 35 - Middle Snake webpage

Exhibit 3.5-2
 2002 303(d) Listed and Impaired Stream Segments: Asotin Implementation Area



Source: Water Quality Assessment of Washington webpage (Ecology 2004b).

Exhibit 4.5-1
 1998 303(d) Listed Stream Segments near the Implementation Area



Source: Ecology, 2004. WRIA 35 - Middle Snake webpage

Exhibit 4.5-2

2002 303(d) Listed and Impaired Stream Segments: Middle Snake Implementation Area

[John Carpenter will eventually be preparing the 303(d) exhibits to replace this]

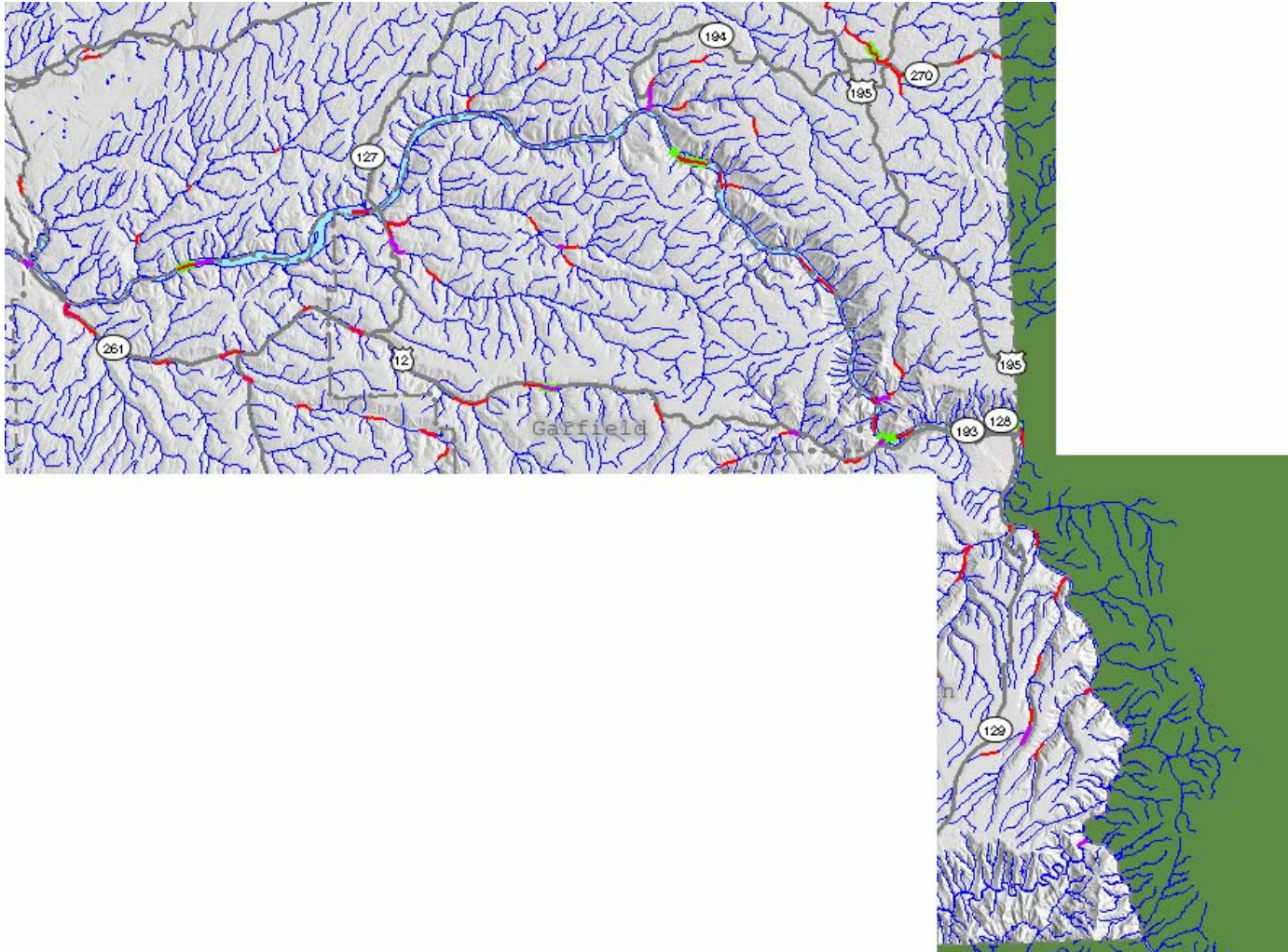
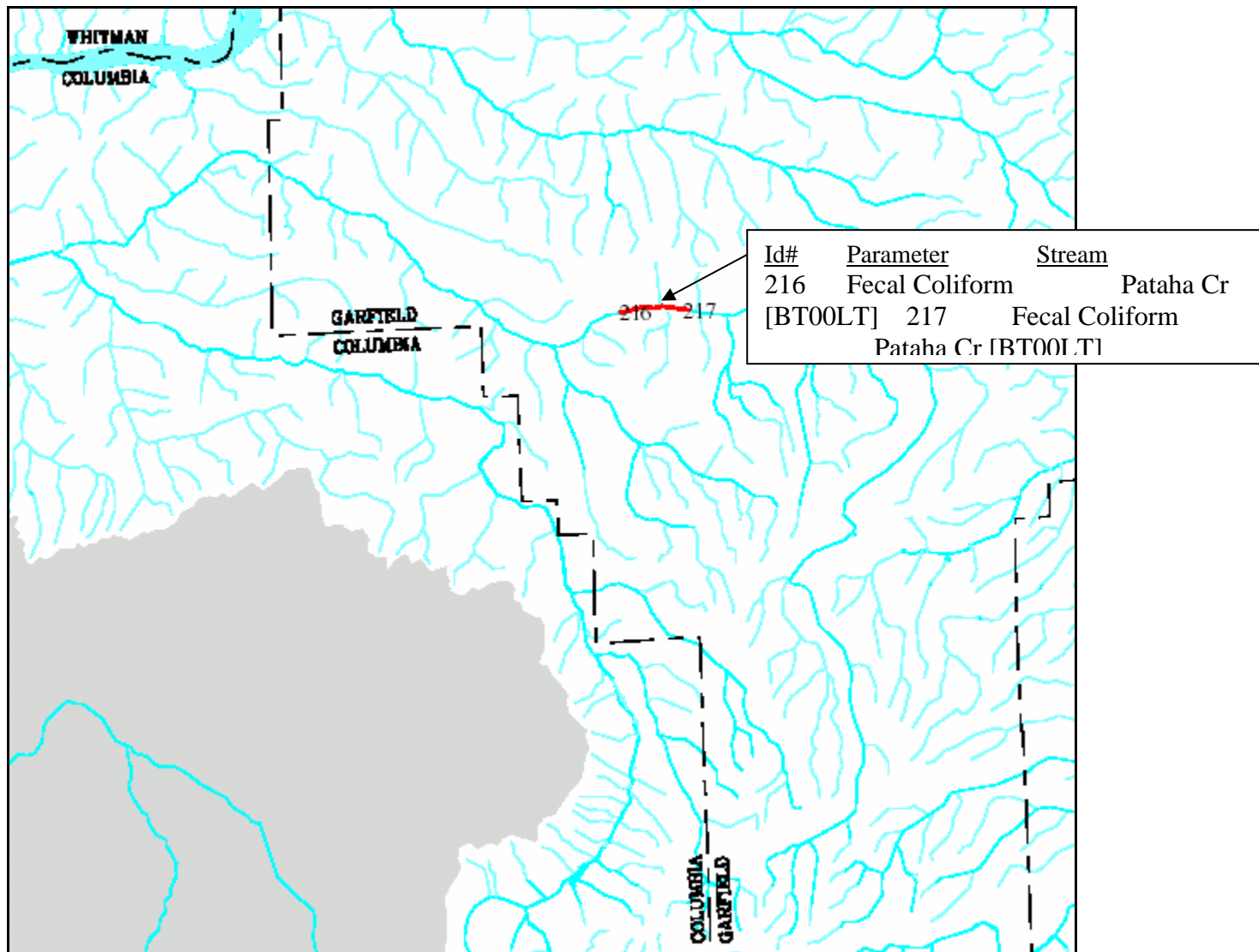


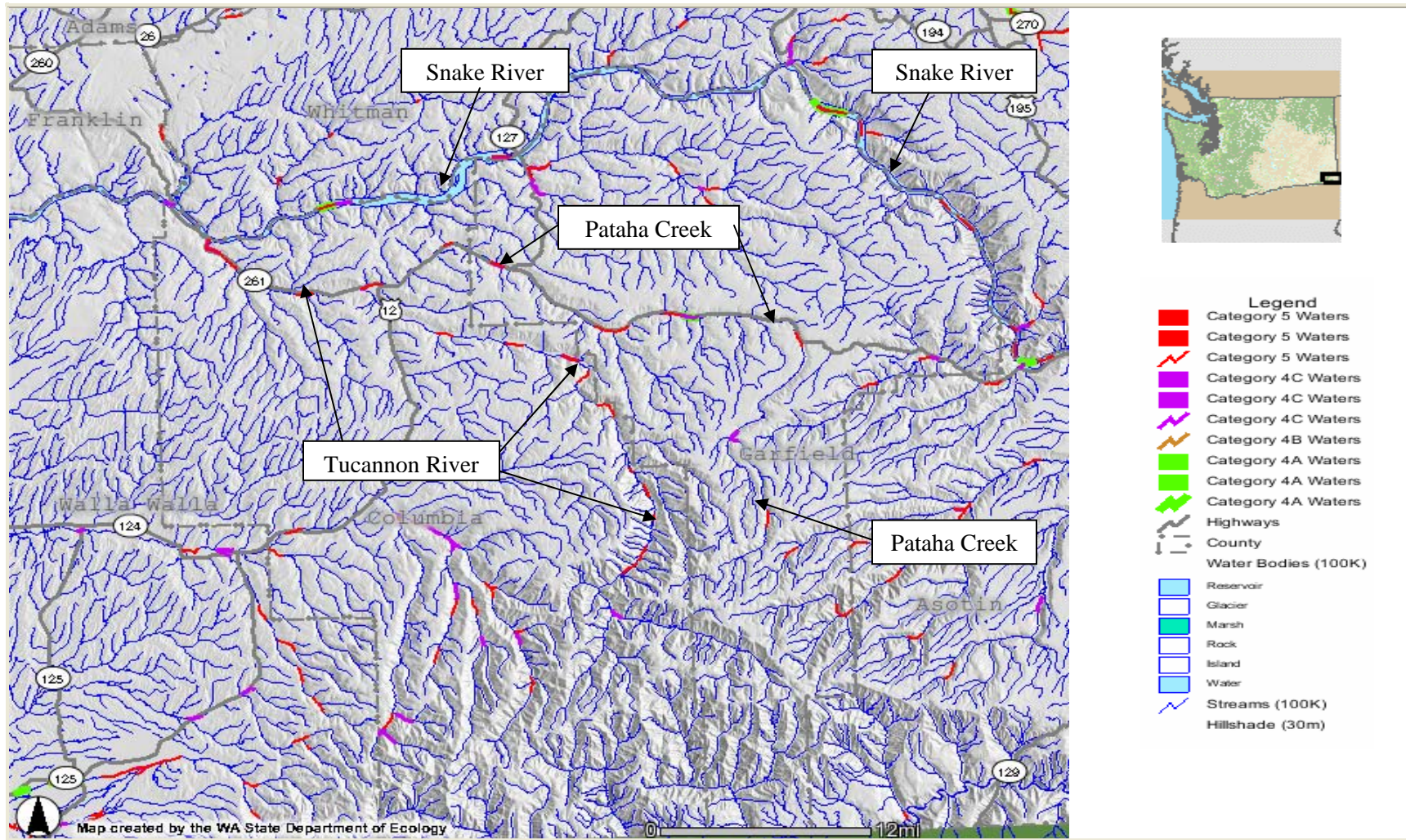
Exhibit 5-5.1

1998 303(d) Listed Stream Segments: Pataha Implementation Area



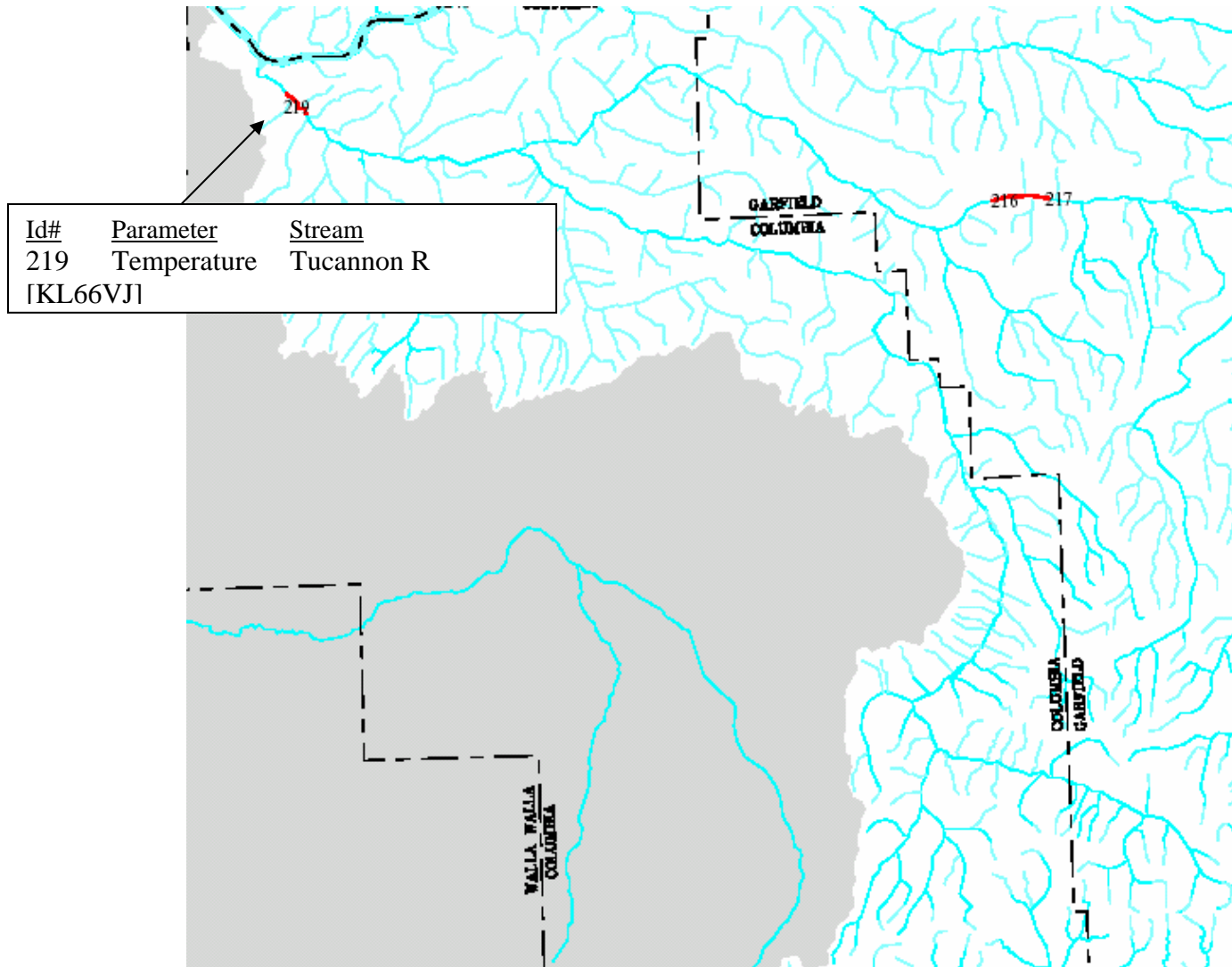
Source: Ecology, 2004. WRIA 35 - Middle Snake webpage

Exhibit 5.5-2
 2002 303(d) Listed and Impaired Stream Segments: Pataha Implementation Area



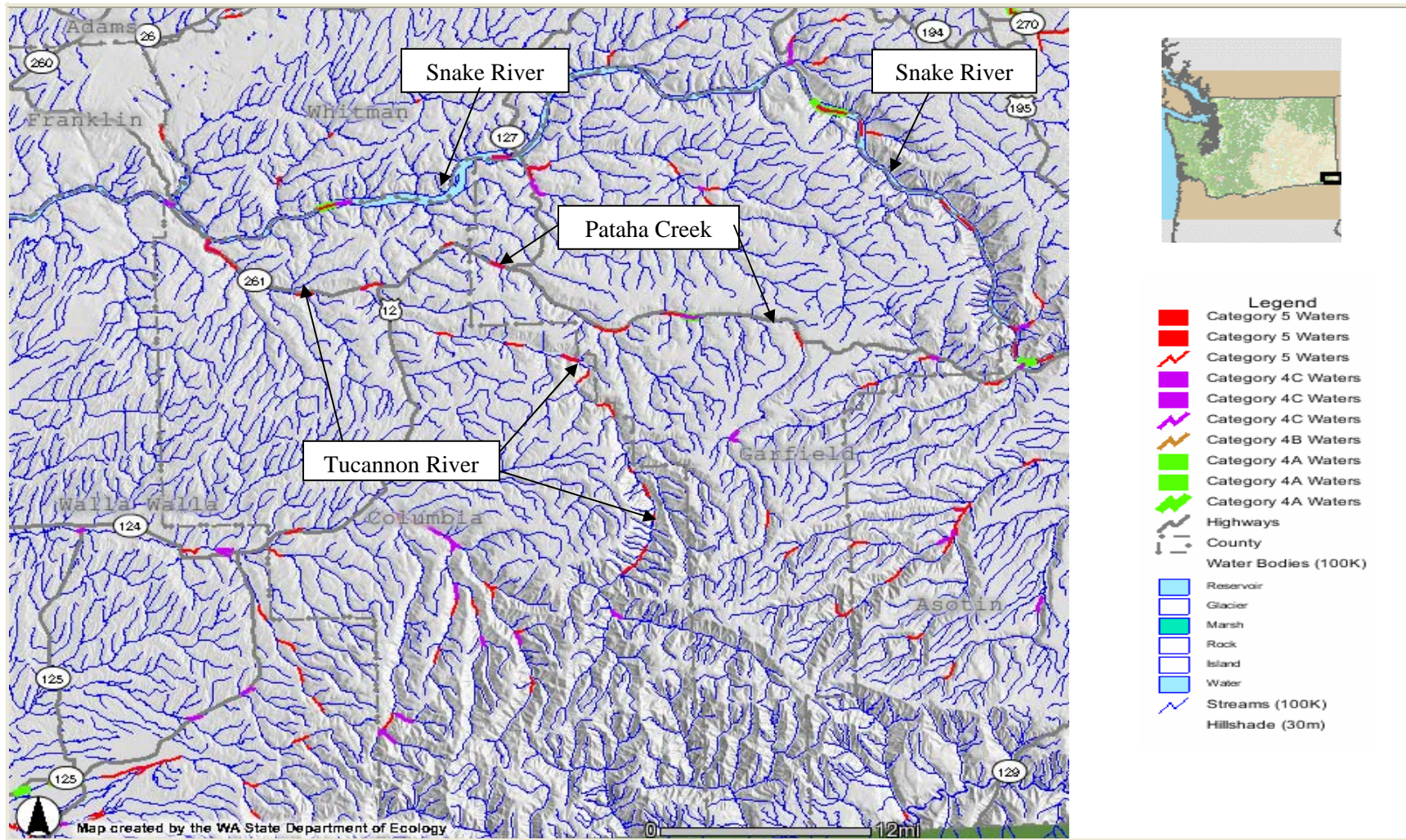
Source: Water Quality Assessment of Washington webpage (Ecology 2004b).

Exhibit 6.5-1
1998 303(d) Listed Stream Segments: Tucannon Implementation Area

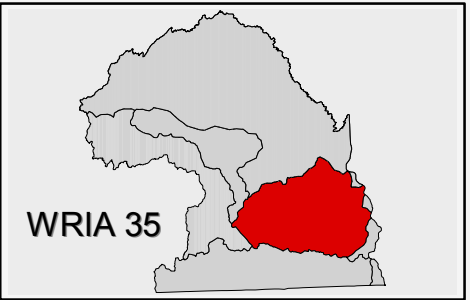


Source: Ecology, 2004. WRIA 35 - Middle Snake webpage

Exhibit 6.5-2
 2002 303(d) Listed and Impaired Stream Segments: Tucannon Implementation Area



Source: Water Quality Assessment of Washington webpage (Ecology 2004b).



USGS 13335050
 ECY 35D070
 EPA 10EPAIN 153665

USGS 14020001

Umatilla
 National
 Forest

WDFW C-2

WDFW GC-5

WDFW C-1



EXHIBIT 3.5-3
 Asotin IA
 Water Quality Monitoring
 Location Map

April 2004

LEGEND

Water Quality Monitoring Stations		General	
▲	USGS	—	Roads
■	EPA	—	Rivers
●	WDFW	■	Umatilla National Forest
★	WSU		
●	ECY		
■	USFS		

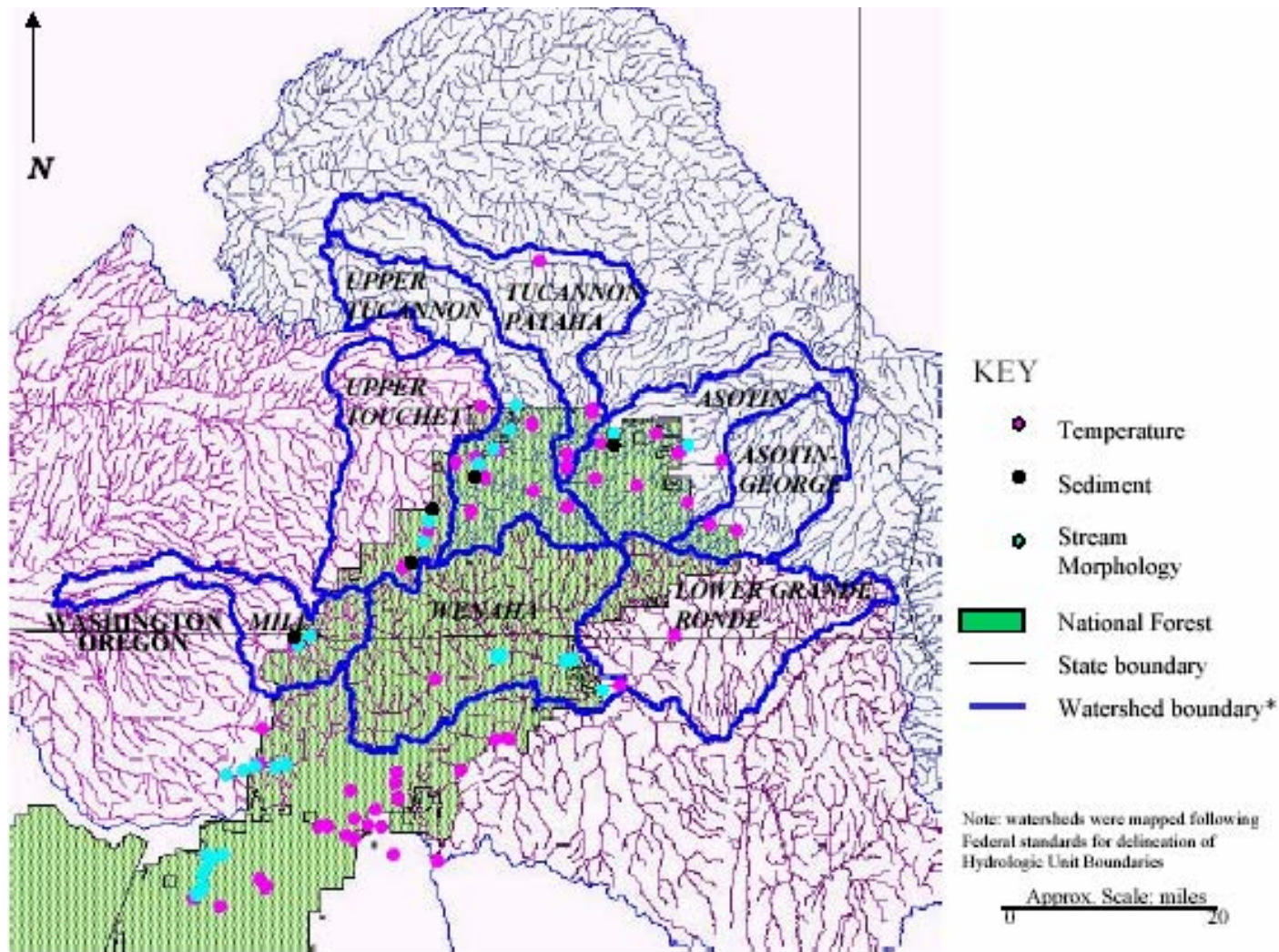
Note:
 Highlighted Water Quality Monitoring Stations
 are considered 'primary' stations.

Exhibit 3-5.3

STORET Water Quality Monitoring Stations in the Asotin Implementation Area

Exhibit 3-5.4

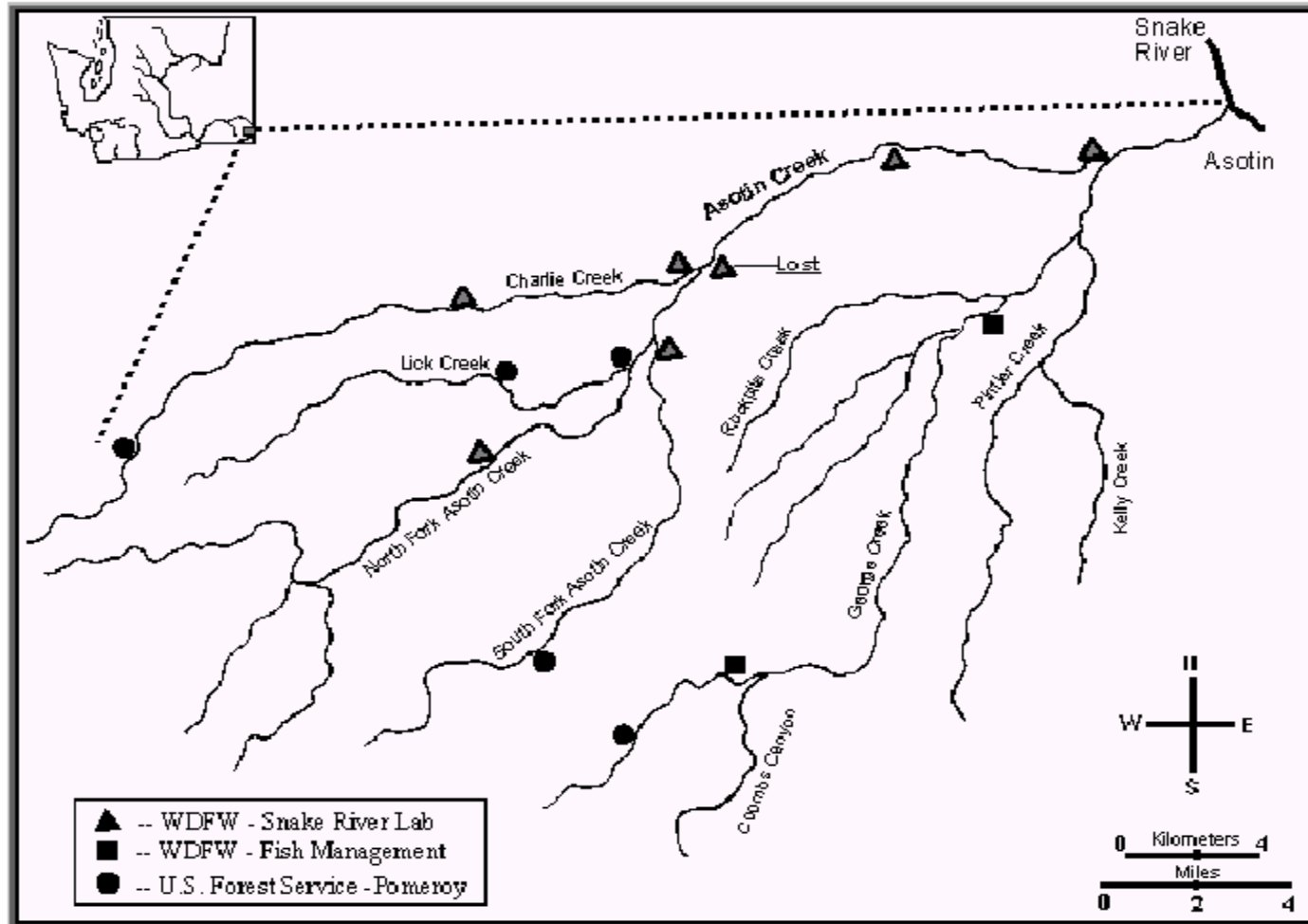
USFS Water Quality Monitoring Stations: Middle Snake Sub-basin and in the area



Source: Tucannon Ecosystem Analysis, Map3-2 (Umatilla National Forest 2002).

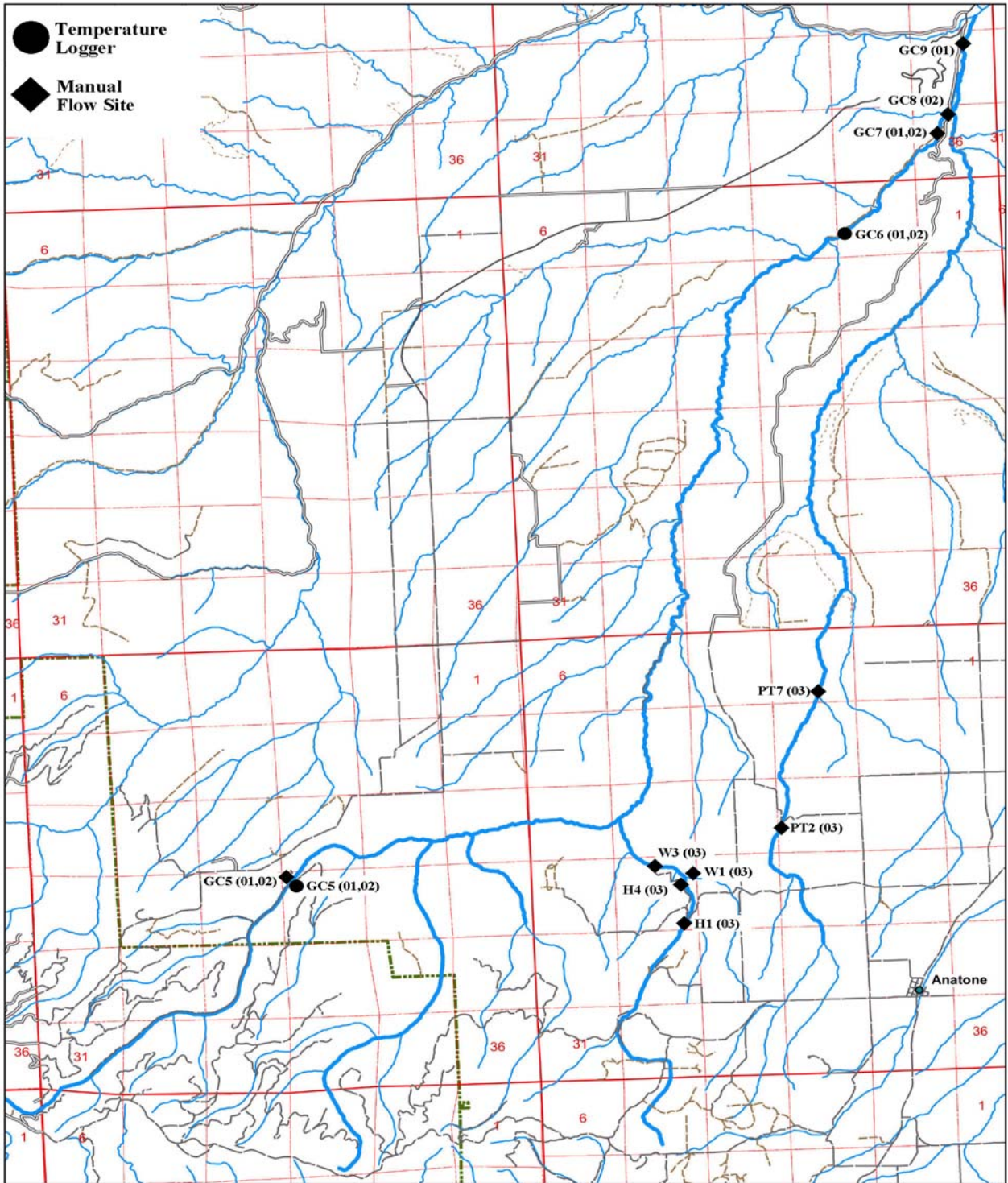
Exhibit 3-5.5

USFS and WDFW Water Quality Monitoring Stations in the Asotin Implementation Area



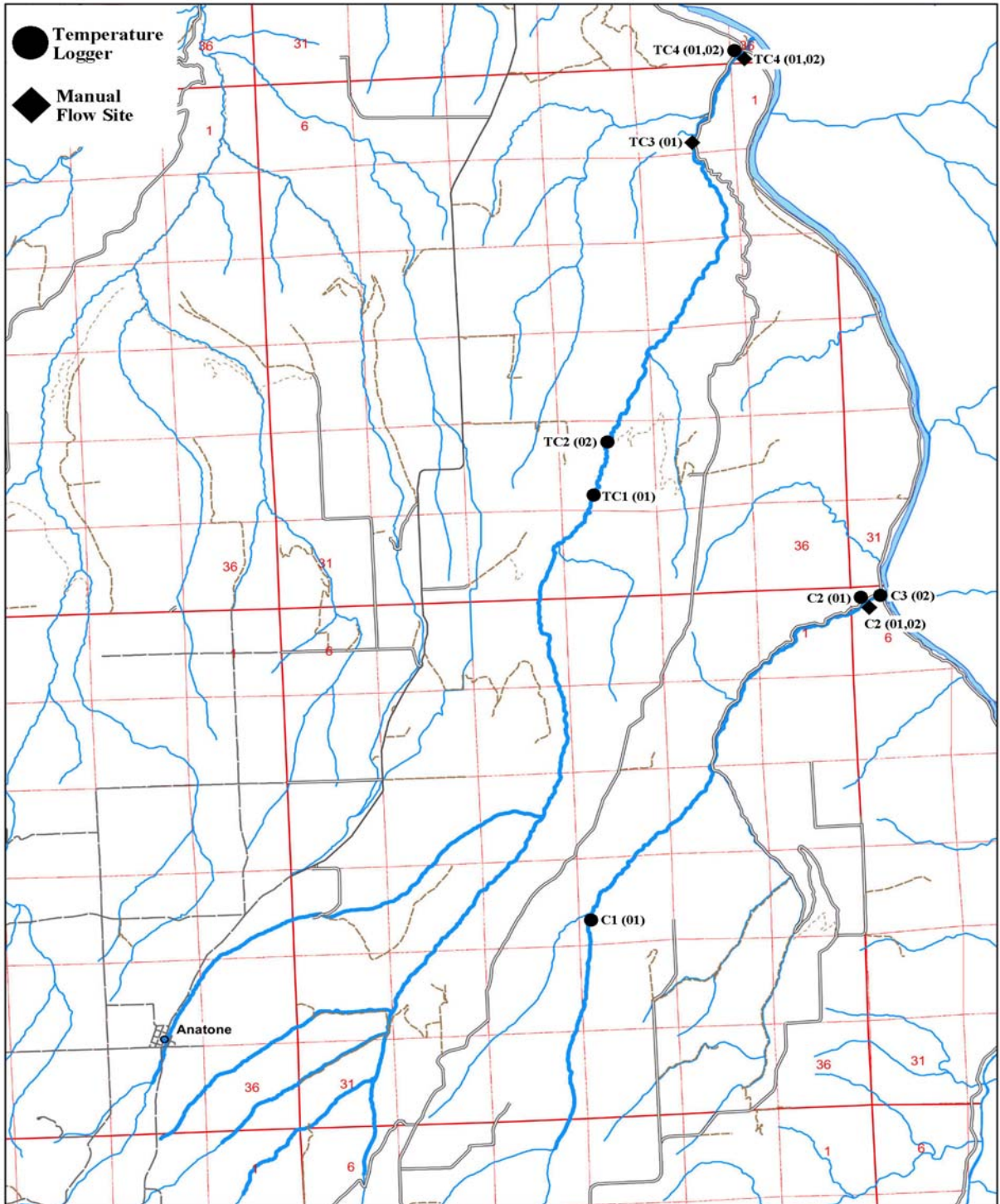
Source: Asotin Creek Instream Habitat Alteration Projects – 2001 Habitat Evaluation, Adult and Juvenile Habitat Utilization and Water Temperature Monitoring, Figure 10 (Bumgarner 2002a).

Exhibit 3-5.6
WDFW Monitoring Stations in George and Pintler Creeks



Source: Draft Brief Assessments of Salmonids and Stream Habitat Conditions in Snake River Tributaries of Asotin, Whitman and Garfield Counties in Washington, March 2001 – June 2003 Final Report, Figure 3 (Mendel, et. al. 2004).

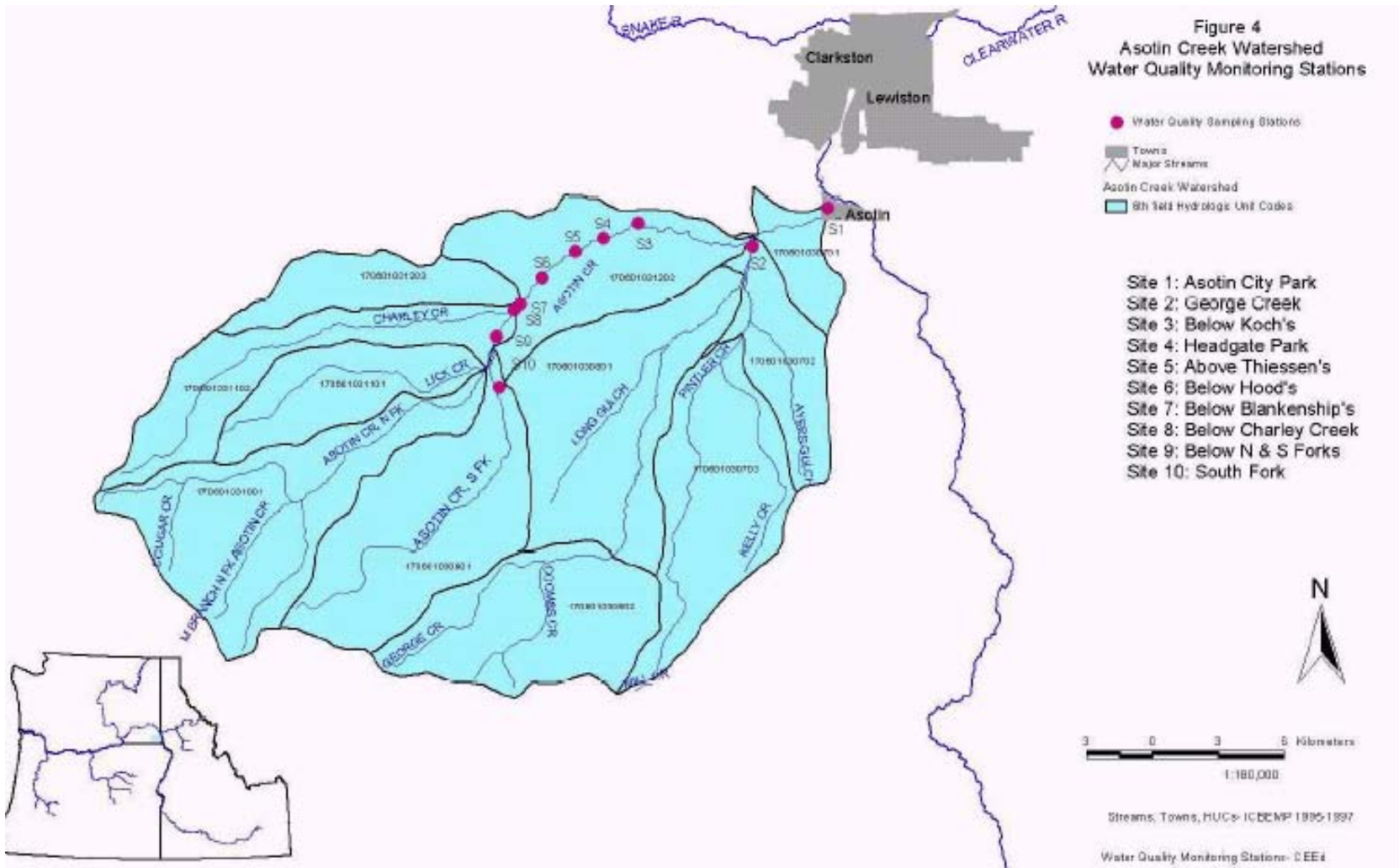
Exhibit 3-5.7
WDFW Monitoring Stations in Tenmile and Couse Creeks



Source: Draft Brief Assessments of Salmonids and Stream Habitat Conditions in Snake River Tributaries of Asotin, Whitman and Garfield Counties in Washington, March 2001 – June 2003 Final Report, Figure 2 (Mendel, et. al. 2004).

Exhibit 3-5.8

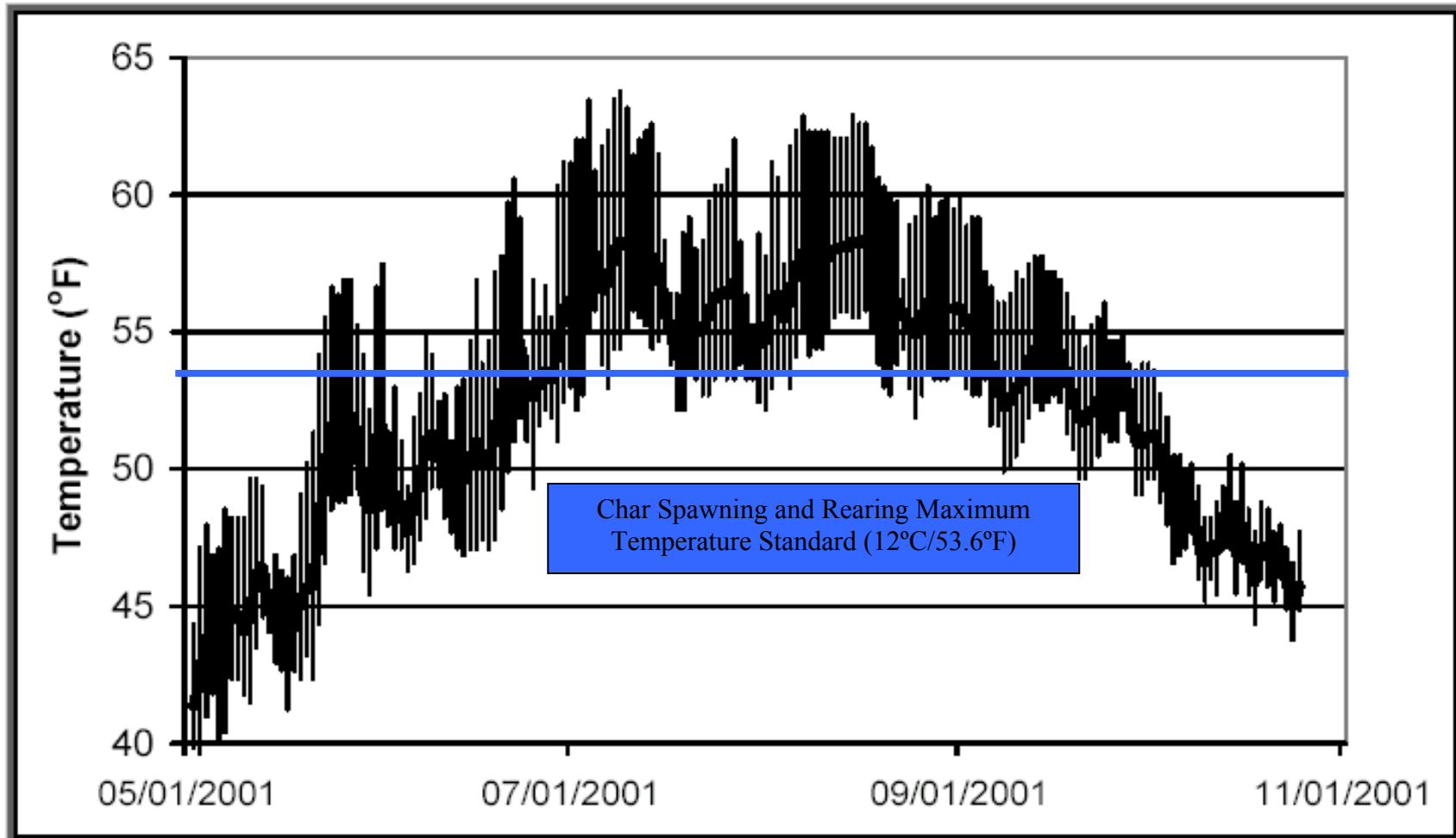
ACCDWSU Water Quality Monitoring Stations on Asotin Creek



Source: Asotin Creek Subbasin Summary, Figure 9 (Stovall 2001).

Exhibit 3-5.9

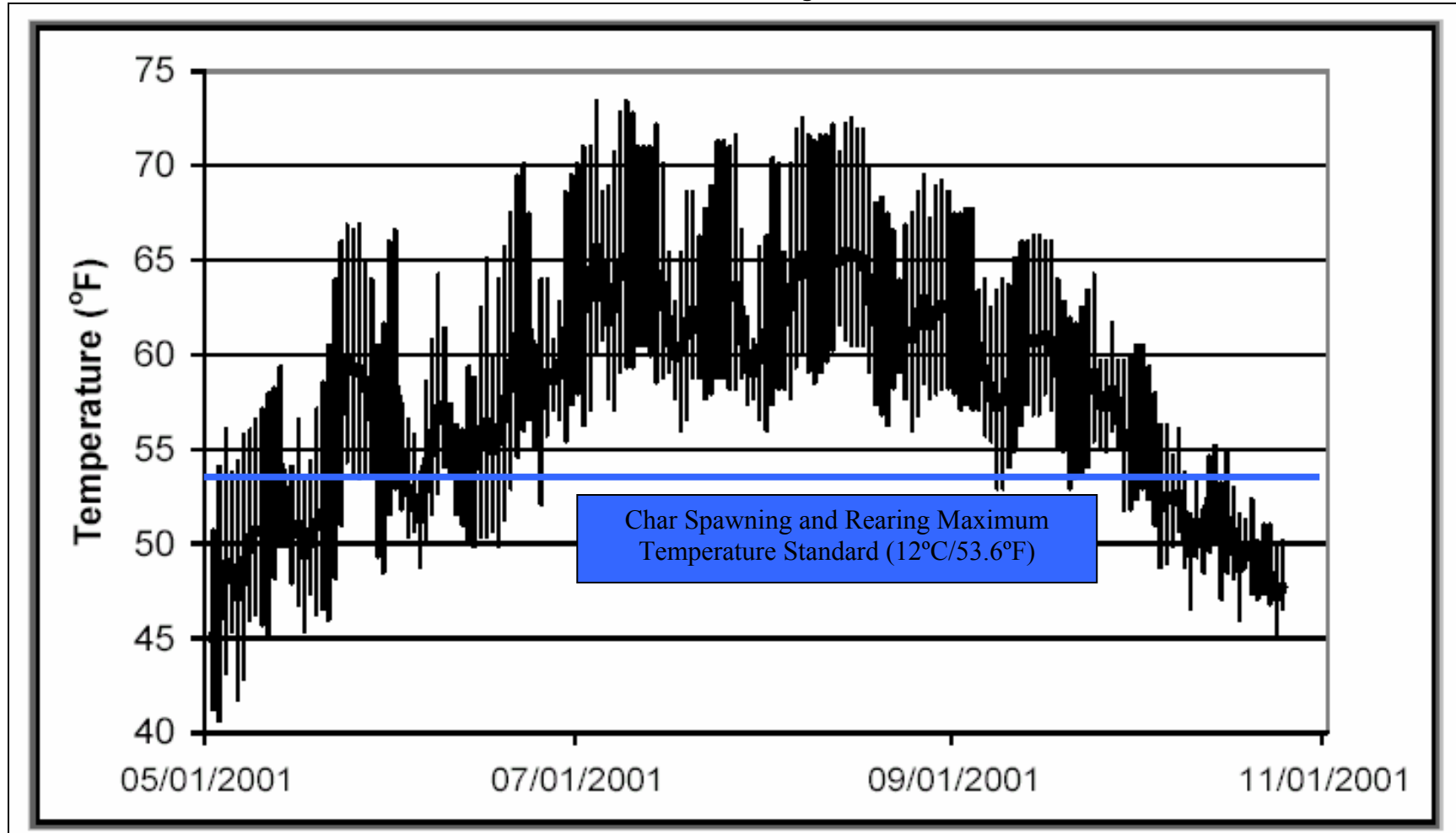
2001 Water Temperature Monitoring in North Fork Asotin Creek at the Forest Service Boundary
WDFW Monitoring Station



Source: Asotin Creek Instream Habitat Alteration Projects – 2001 Habitat Evaluation, Adult and Juvenile Habitat Utilization and Water Temperature Monitoring, Appendix B, Figure 5 (Bumgarner 2002a).

Exhibit 3-5.10

2001 Water Temperature Monitoring in South Fork Asotin Creek near the mouth
WDFW Monitoring Station

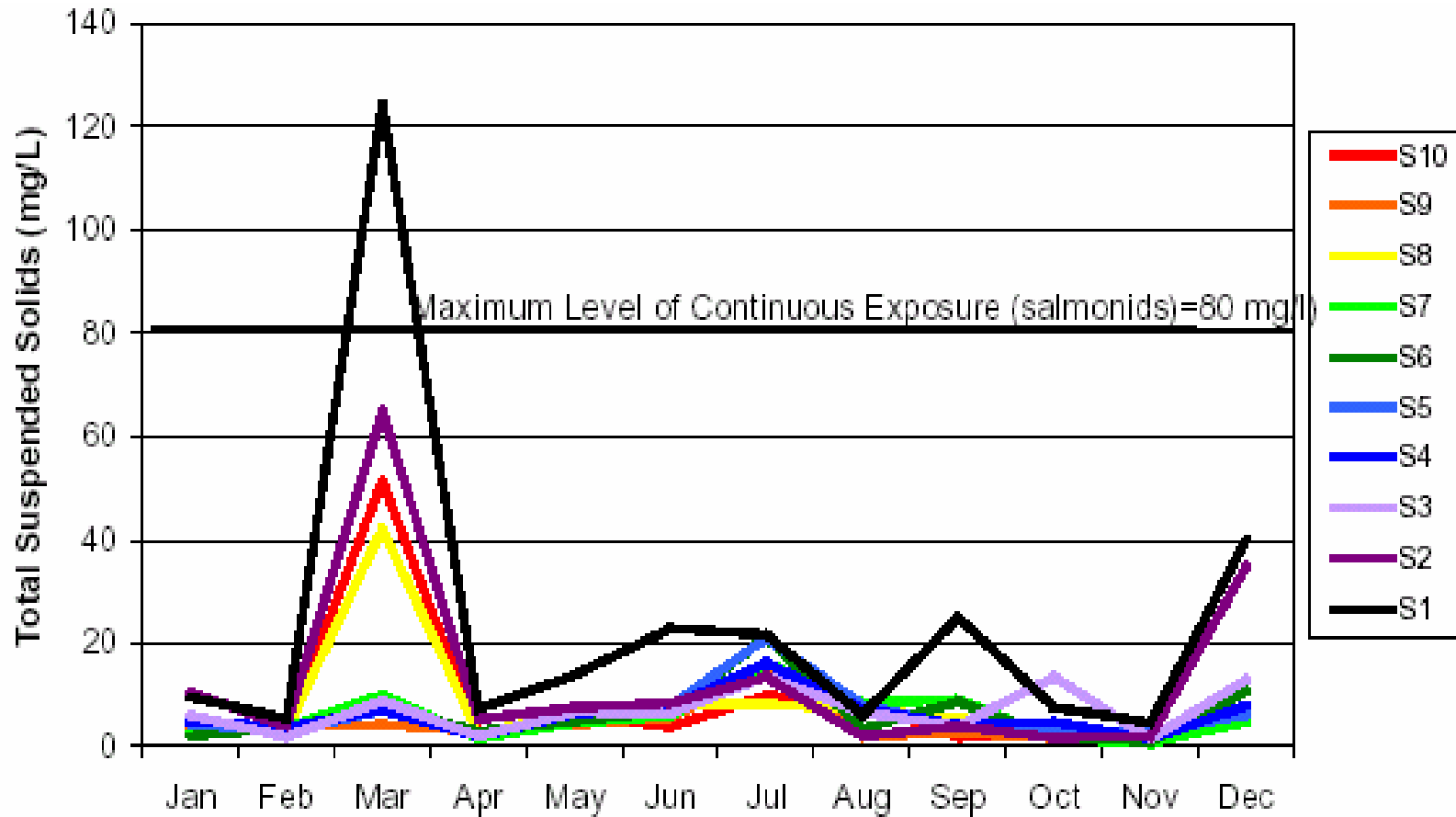


Source: Asotin Creek Instream Habitat Alteration Projects – 2001 Habitat Evaluation, Adult and Juvenile Habitat Utilization and Water Temperature Monitoring, Appendix B, Figure 6 (Bumgarner 2002a).

Exhibit 3-5.11

Total Suspended Monitoring in Asotin Creek by ACCD and WSU

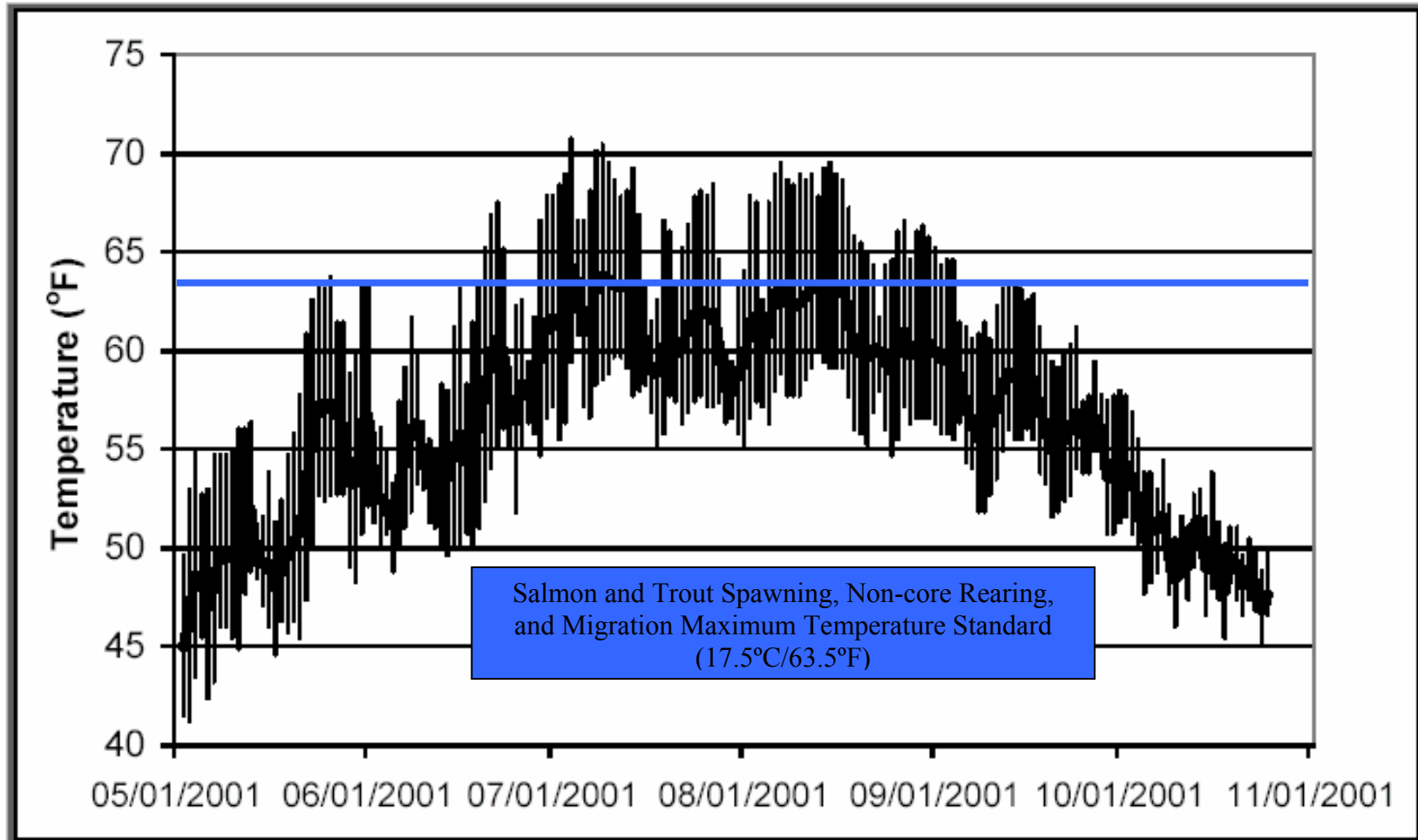
Average of Two Instantaneous TSS Readings for Sites 1 through 10 between November 1998 and October 1999



Source: Asotin Creek Subbasin Summary, Figure 11 (Stovall 2001). Refer to Exhibit 3-6.6 for monitoring site locations.

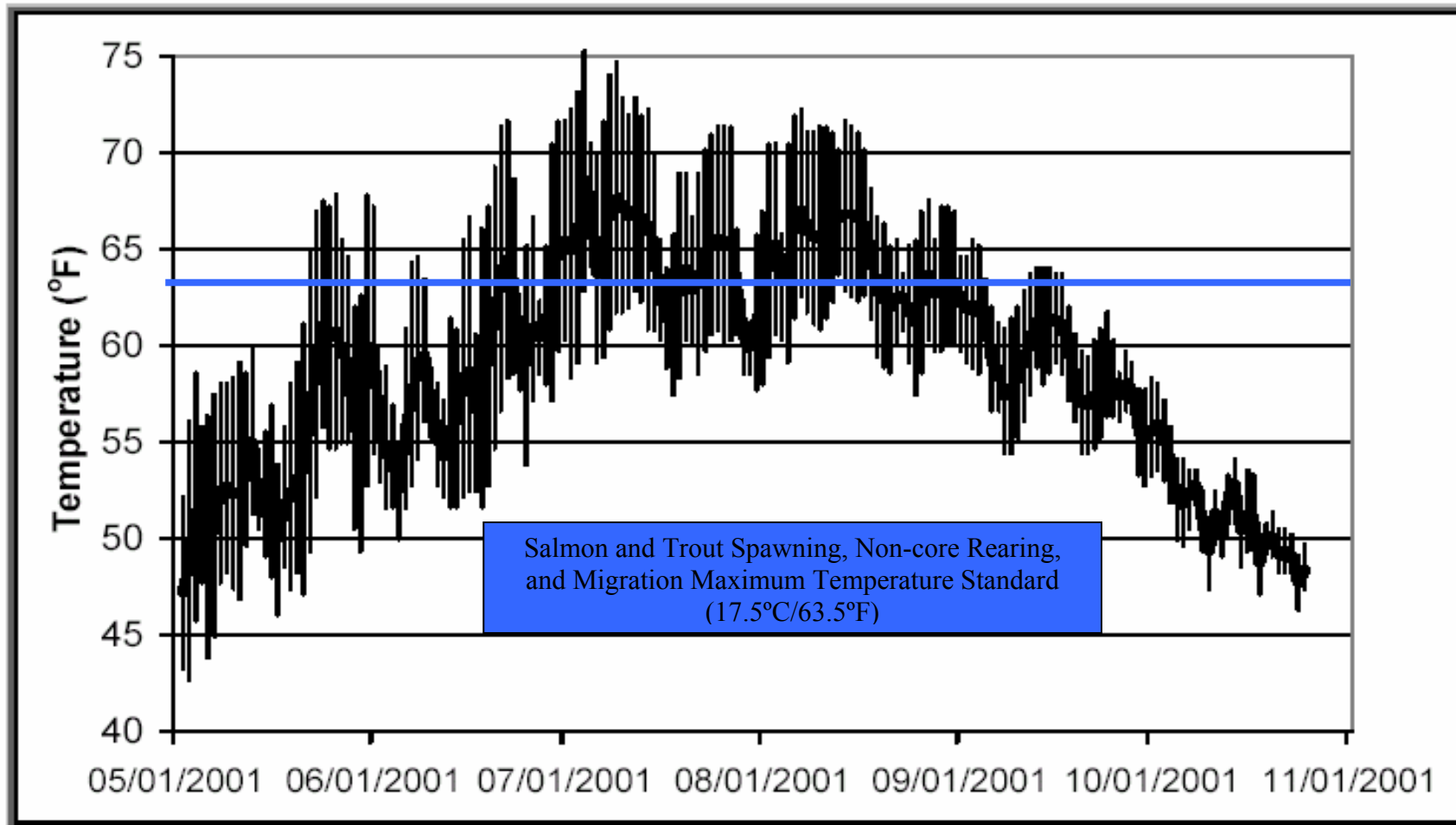
Exhibit 3-5.12

2001 Water Temperature Monitoring in Asotin Creek at the North and South Forks Confluence
WDFW Monitoring Station



Source: Asotin Creek Instream Habitat Alteration Projects – 2001 Habitat Evaluation, Adult and Juvenile Habitat Utilization and Water Temperature Monitoring, Appendix B, Figure 4 (Bumgarner 2002a).

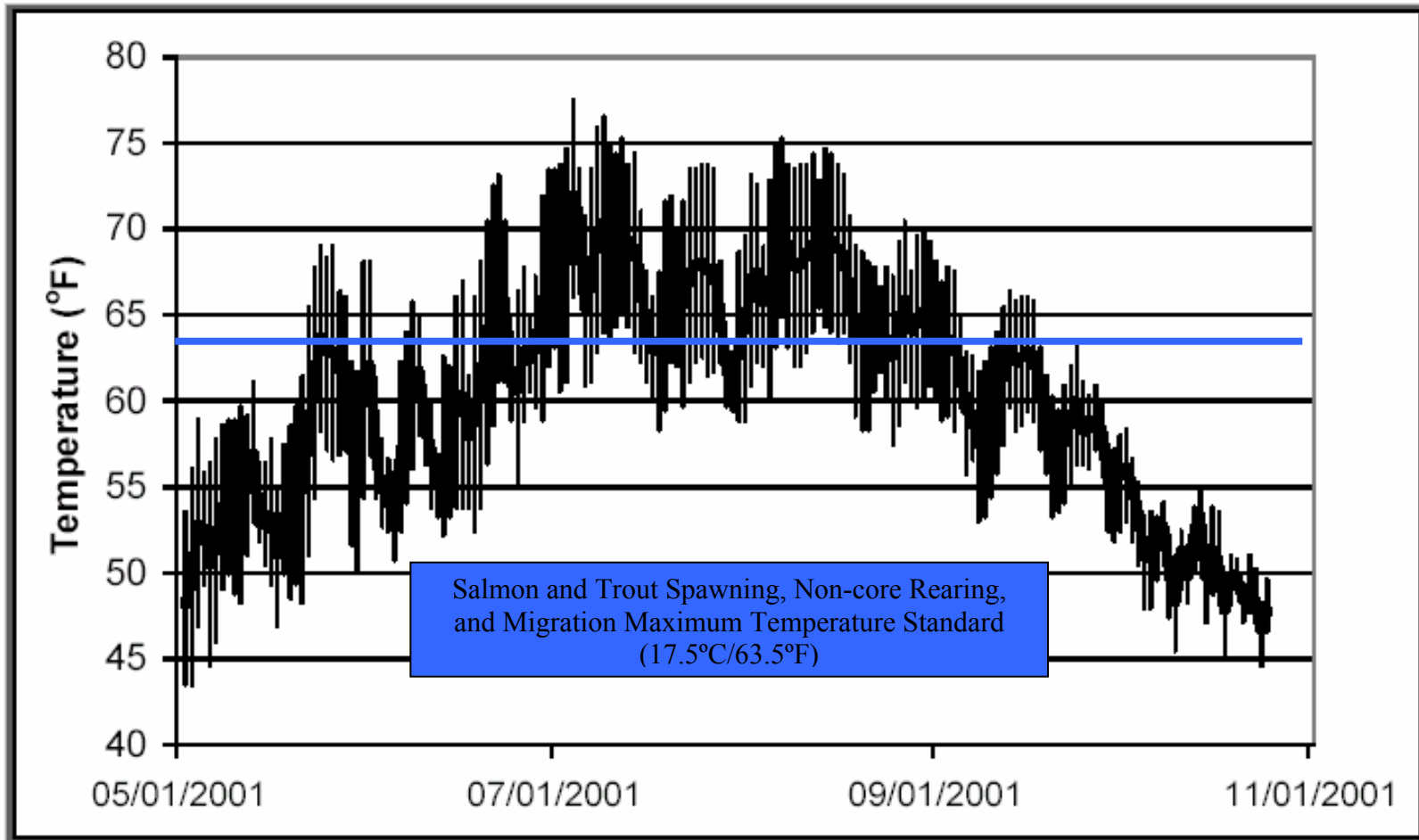
Exhibit 3-5.13
2001 Water Temperature Monitoring in Asotin Creek at Headgate Park
WDFW Monitoring Station



Source: Asotin Creek Instream Habitat Alteration Projects – 2001 Habitat Evaluation, Adult and Juvenile Habitat Utilization and Water Temperature Monitoring, Appendix B, Figure 3 (Bumgarner 2002a).

Exhibit 3-5.14

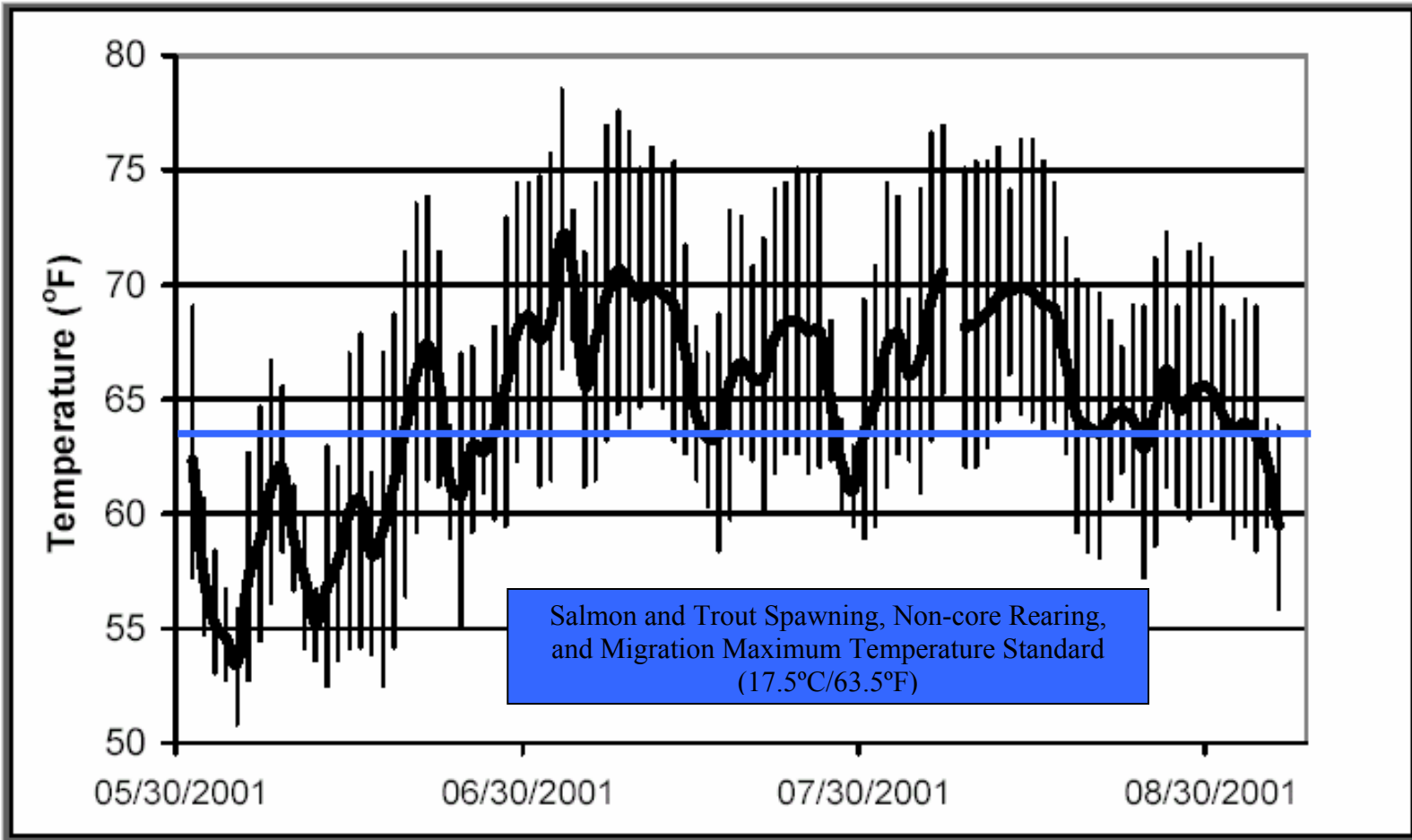
2001 Water Temperature Monitoring in Asotin Creek above George Creek
WDFW Monitoring Station



Source: Asotin Creek Instream Habitat Alteration Projects – 2001 Habitat Evaluation, Adult and Juvenile Habitat Utilization and Water Temperature Monitoring, Appendix B, Figure 2 (Bumgarner 2002a).

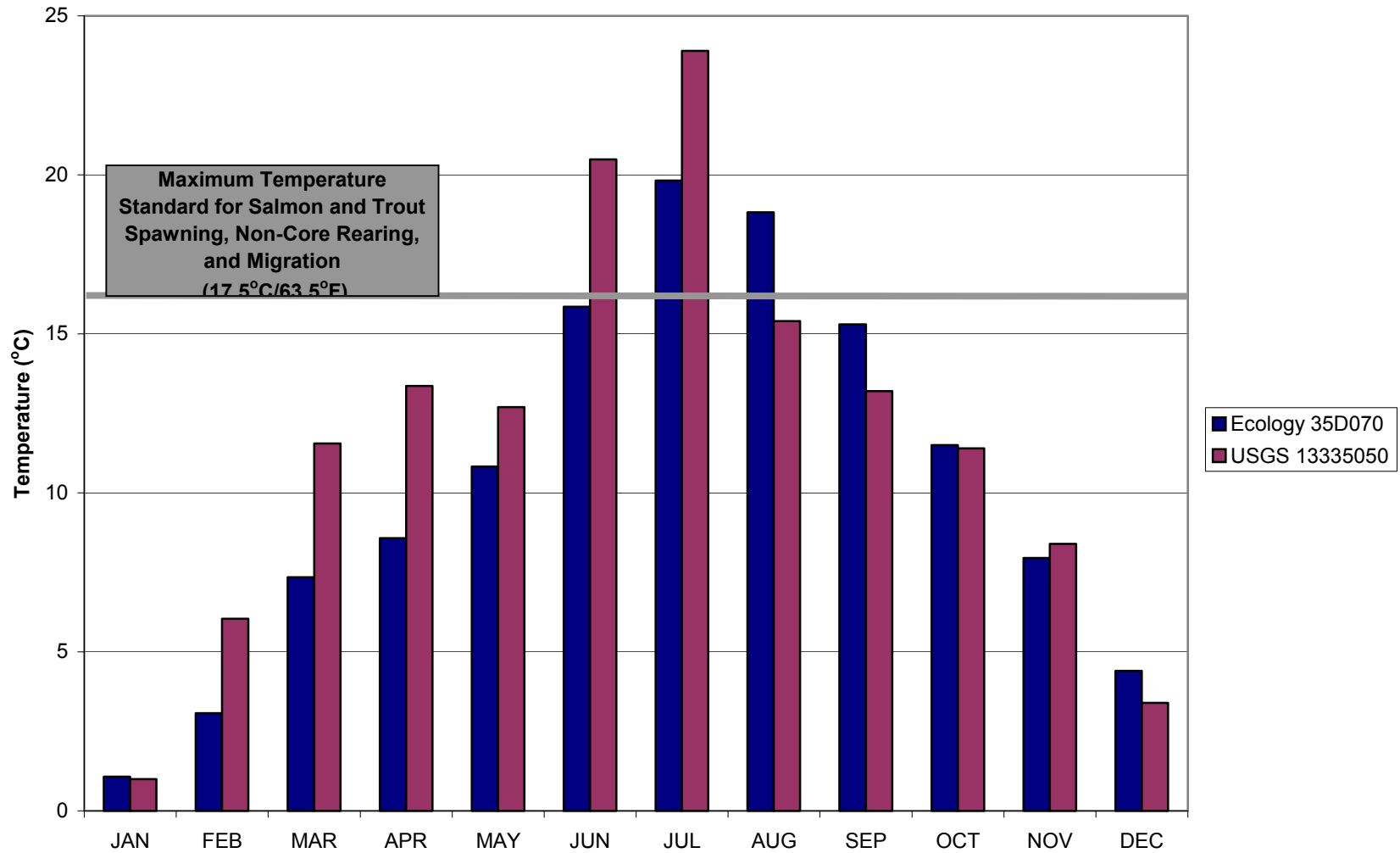
Exhibit 3-5.15

2001 Water Temperature Monitoring in Asotin Creek at Asotin City Park near mouth
WDFW Monitoring Station

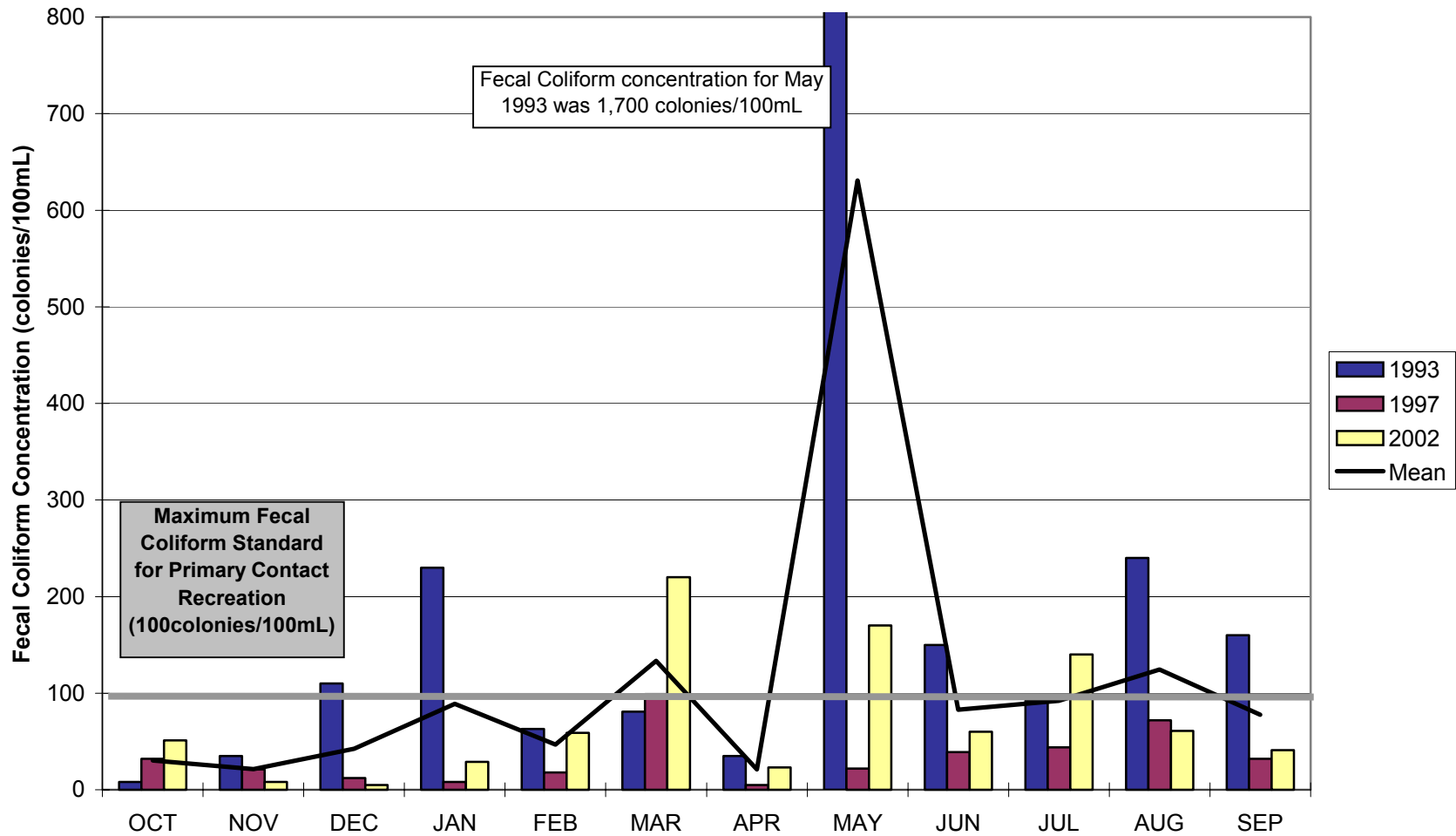


Source: Asotin Creek Instream Habitat Alteration Projects – 2001 Habitat Evaluation, Adult and Juvenile Habitat Utilization and Water Temperature Monitoring, Appendix B, Figure 1 (Bumgarner 2002a).

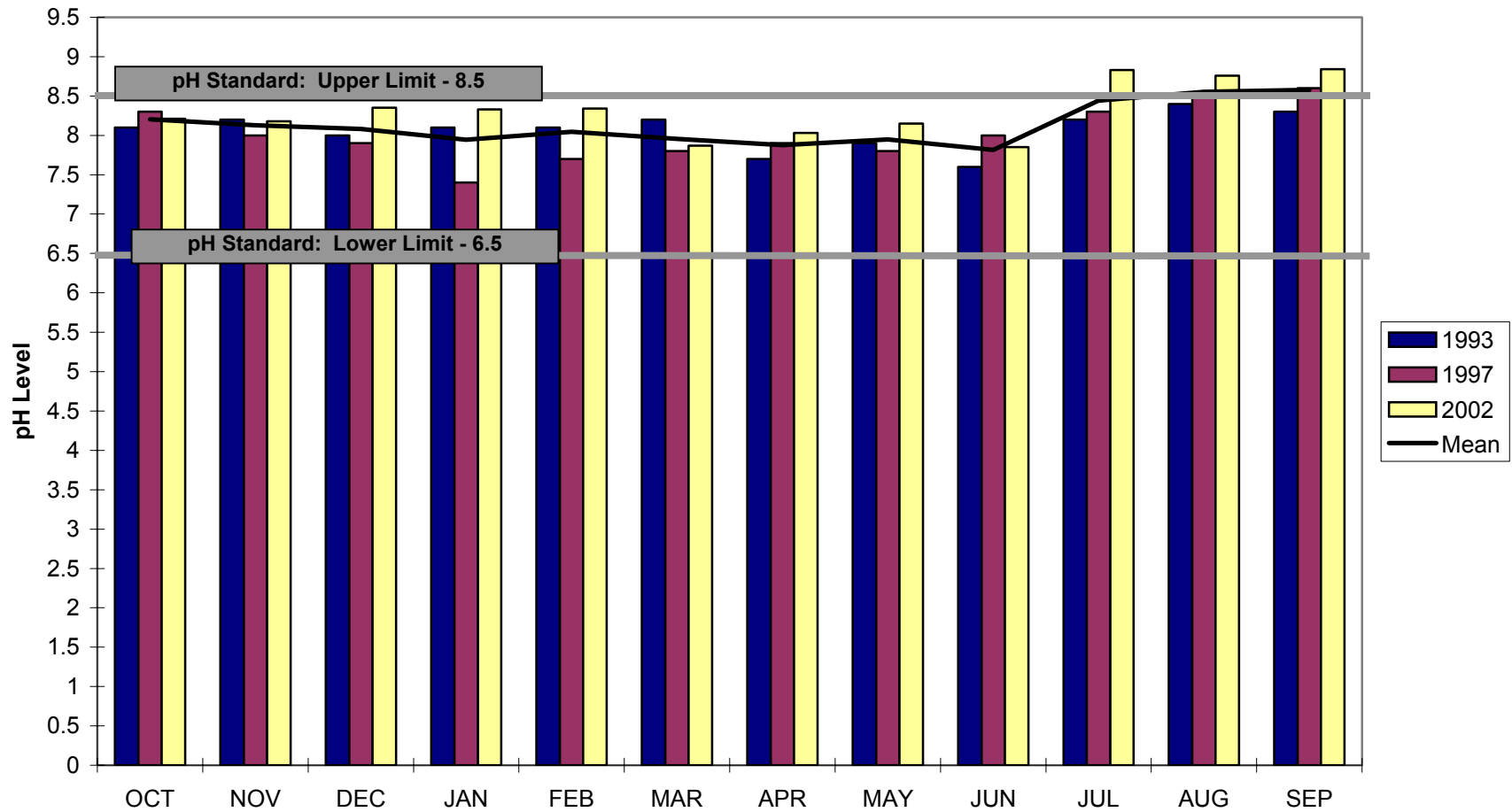
Geometric Mean Temperature Monitoring in Asotin Creek near Asotin, Washington
Ecology 35D070: 1977; 1993; 1997; and 2002
USGS 13335050: 1968; 1976-1977; and 1989



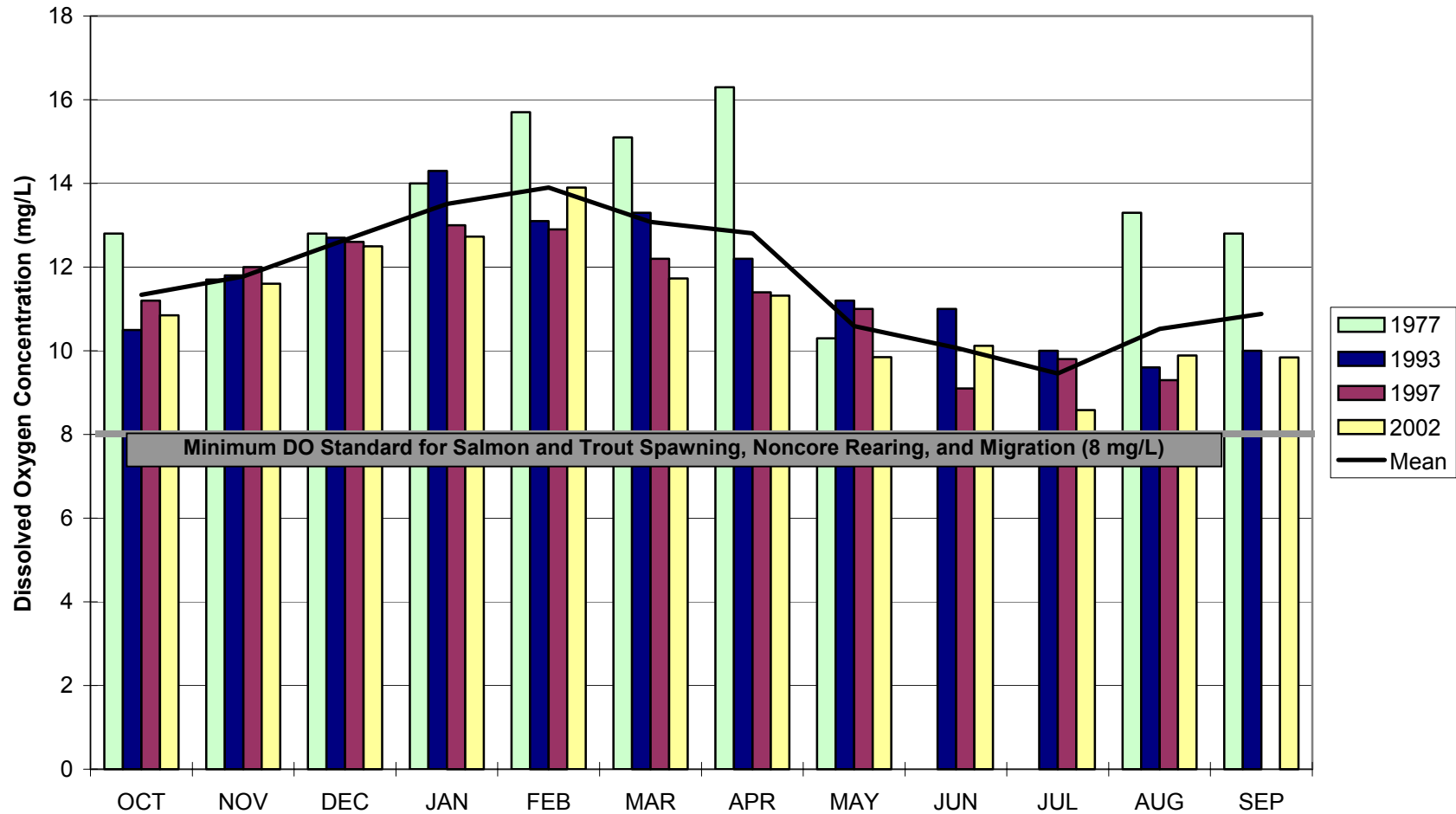
**Fecal Coliform Monitoring in Asotin Creek near the mouth
Ecology 35D070: 1993, 1997, and 2002**



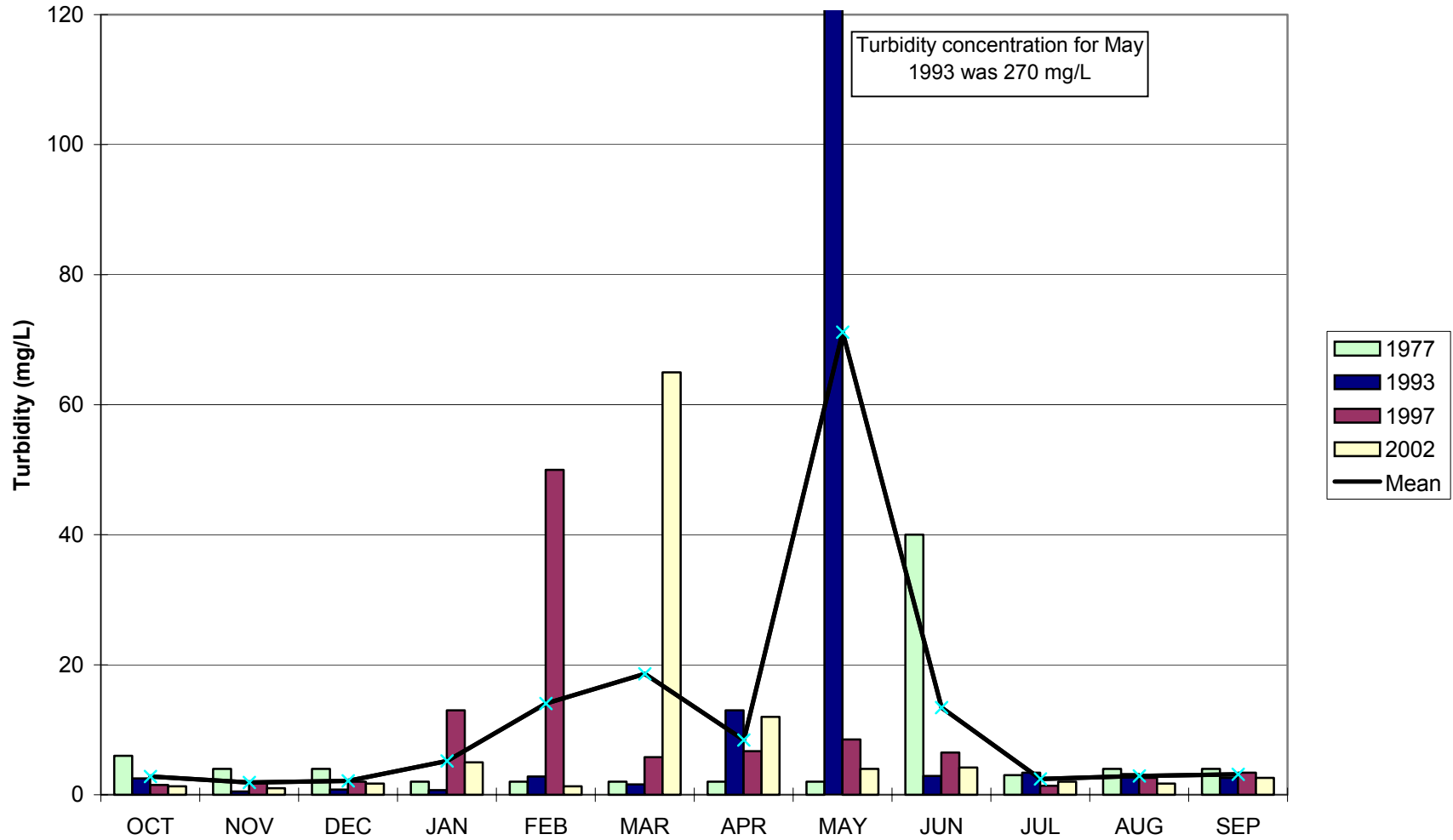
pH Monitoring in Asotin Creek near the mouth Ecology 35D070: 1993, 1997, and 2002



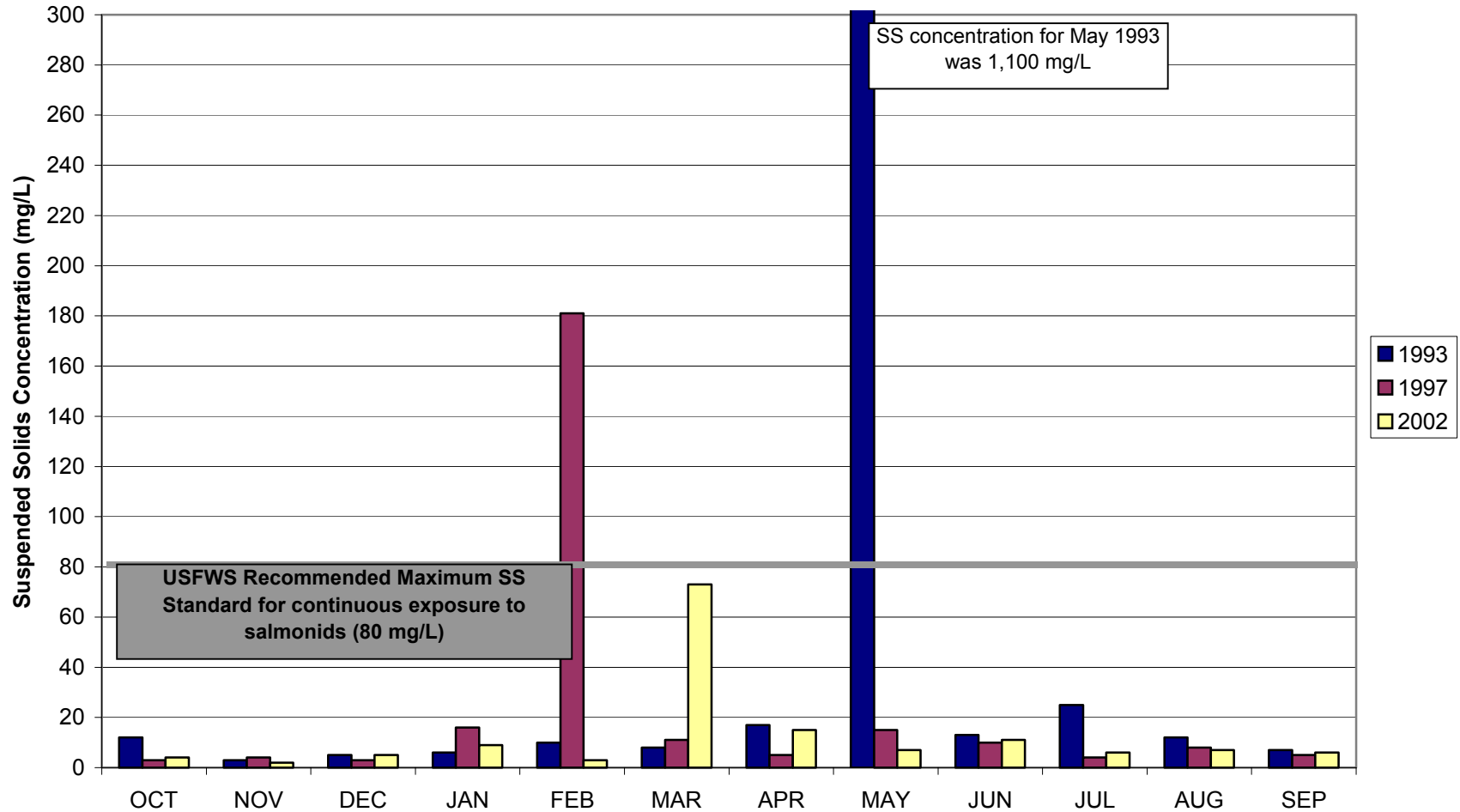
**Dissolved Oxygen Monitoring in Asotin Creek near the mouth
Ecology 35D070: 1977, 1993, 1997, and 2002**



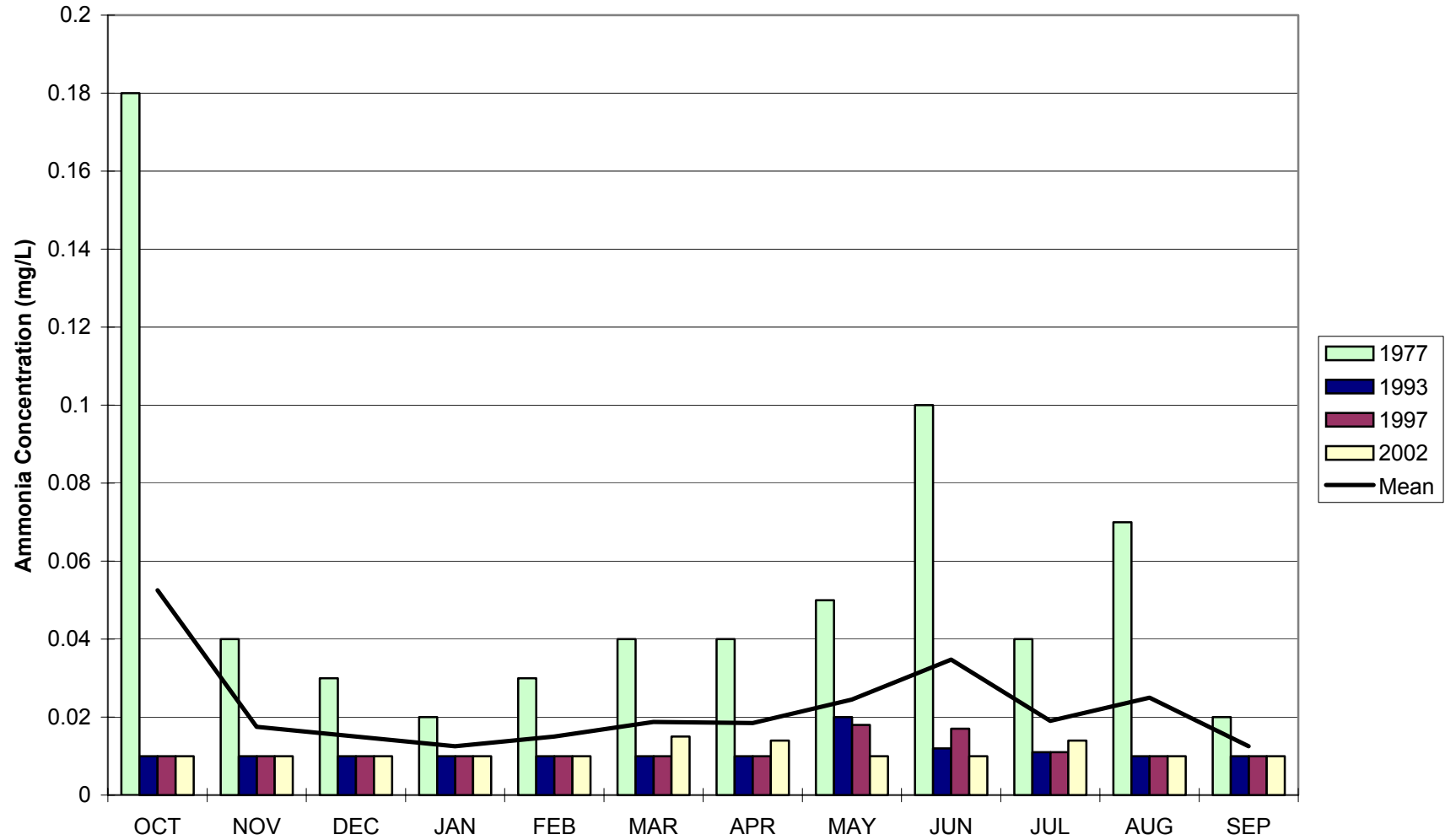
**Turbidity Monitoring in Asotin Creek near the mouth
Ecology 35D070: 1993, 1997, and 2002**



Suspended Solids Monitoring in Asotin Creek near the mouth Ecology 35D070: 1993, 1997, and 2002



Ammonia Monitoring in Asotin Creek near mouth Ecology 35D070: 1977, 1993, 1997, 2002



**Total Phosphorous Monitoring in Asotin Creek near Mouth
Ecology 35D070: 1977, 1993, 1997, 2002**

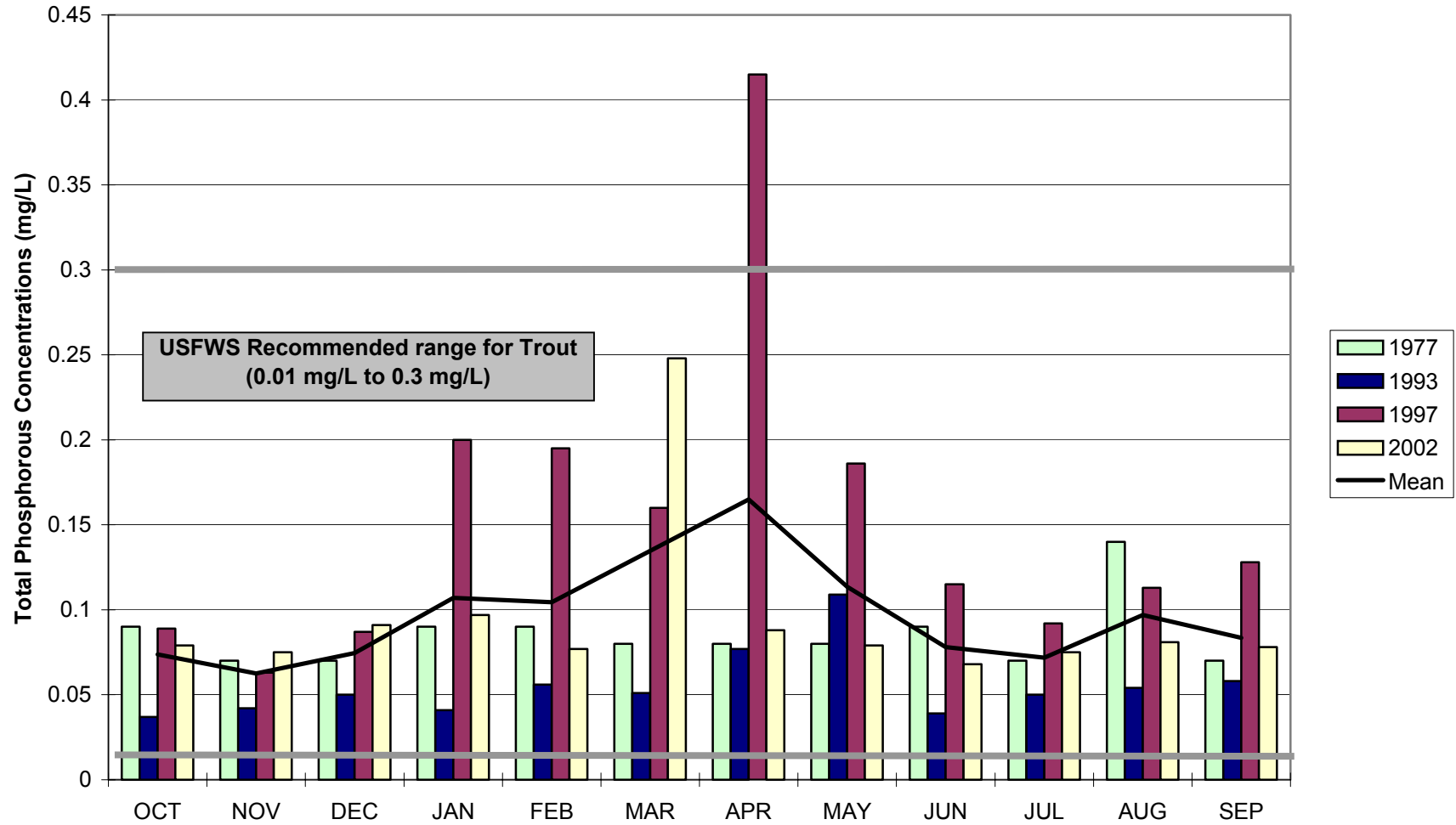
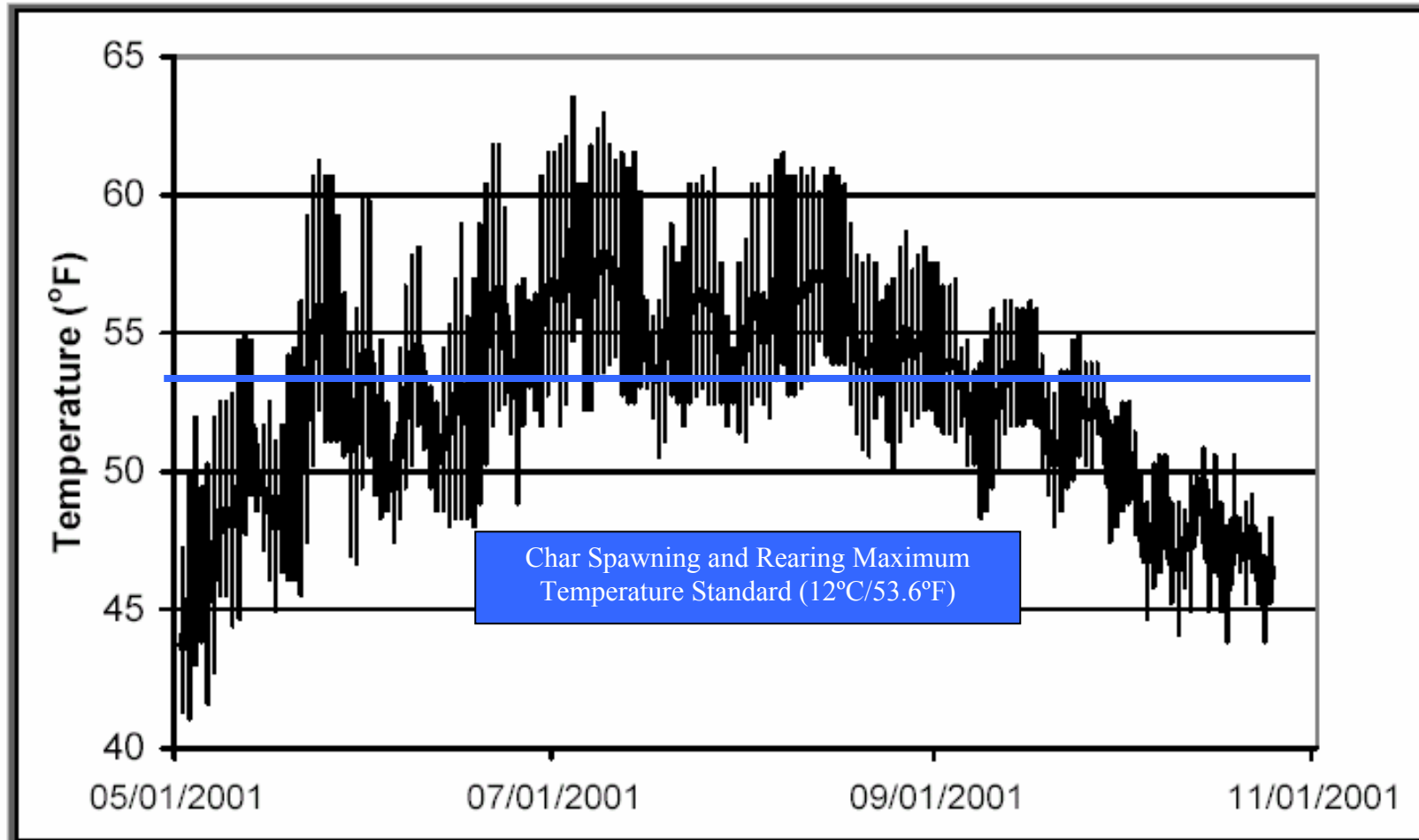


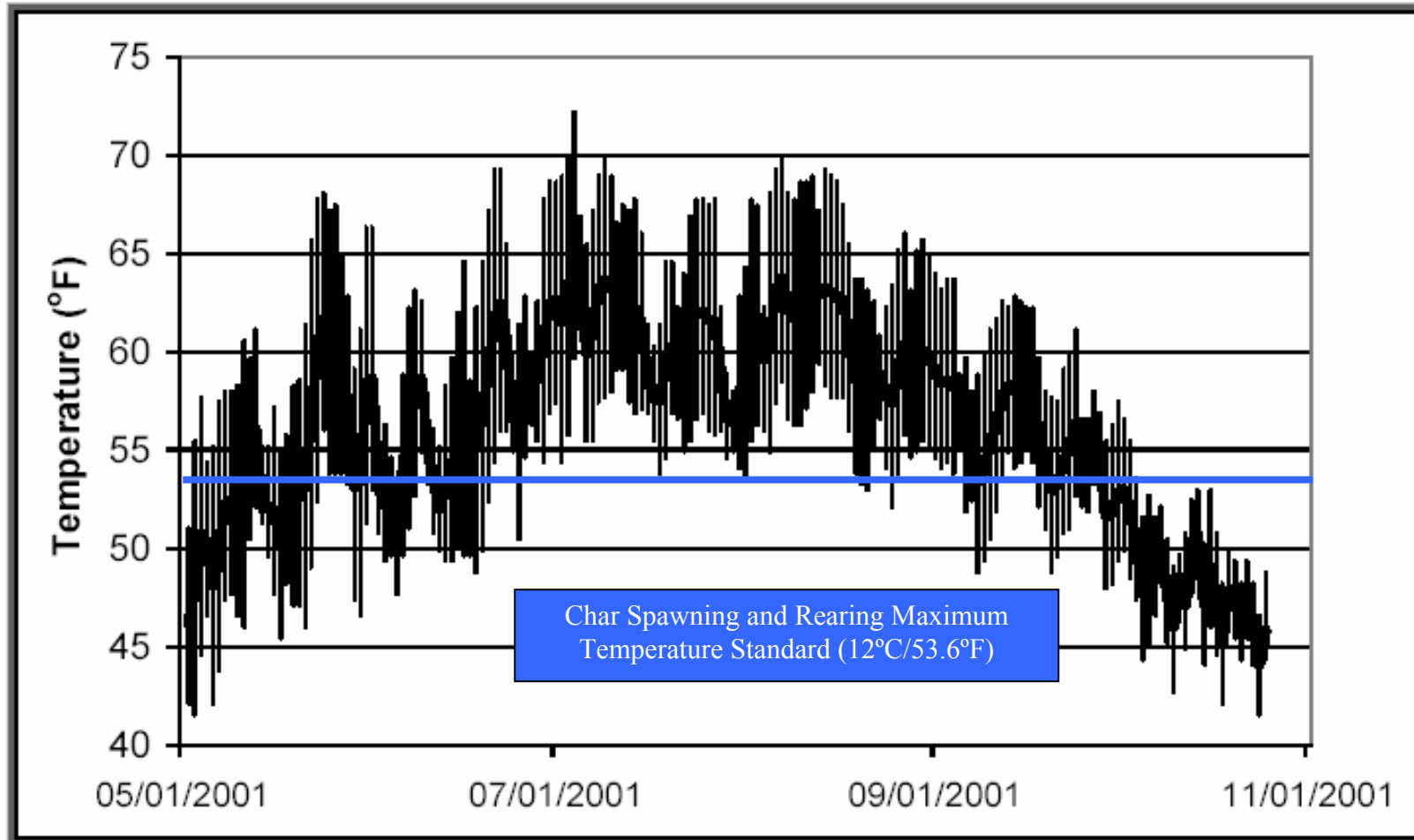
Exhibit 3-5.24

2001 Water Temperature Monitoring in Charley Creek at the Forest Service Boundary
WDFW Monitoring Station



Source: Asotin Creek Instream Habitat Alteration Projects – 2001 Habitat Evaluation, Adult and Juvenile Habitat Utilization and Water Temperature Monitoring, Appendix B, Figure 8 (Bumgarner 2002a).

Exhibit 3-5.25
2001 Water Temperature Monitoring in Charley Creek near the mouth
WDFW Monitoring Station



Source: Asotin Creek Instream Habitat Alteration Projects – 2001 Habitat Evaluation, Adult and Juvenile Habitat Utilization and Water Temperature Monitoring, Appendix B, Figure 7 (Bumgarner 2002a).

Exhibit 3-5.26

**Geometric Mean of Maximum Temperature Monitoring in Charley Creek
USFS 113FORS6 14020001: (May - November) 1973 - 1977**

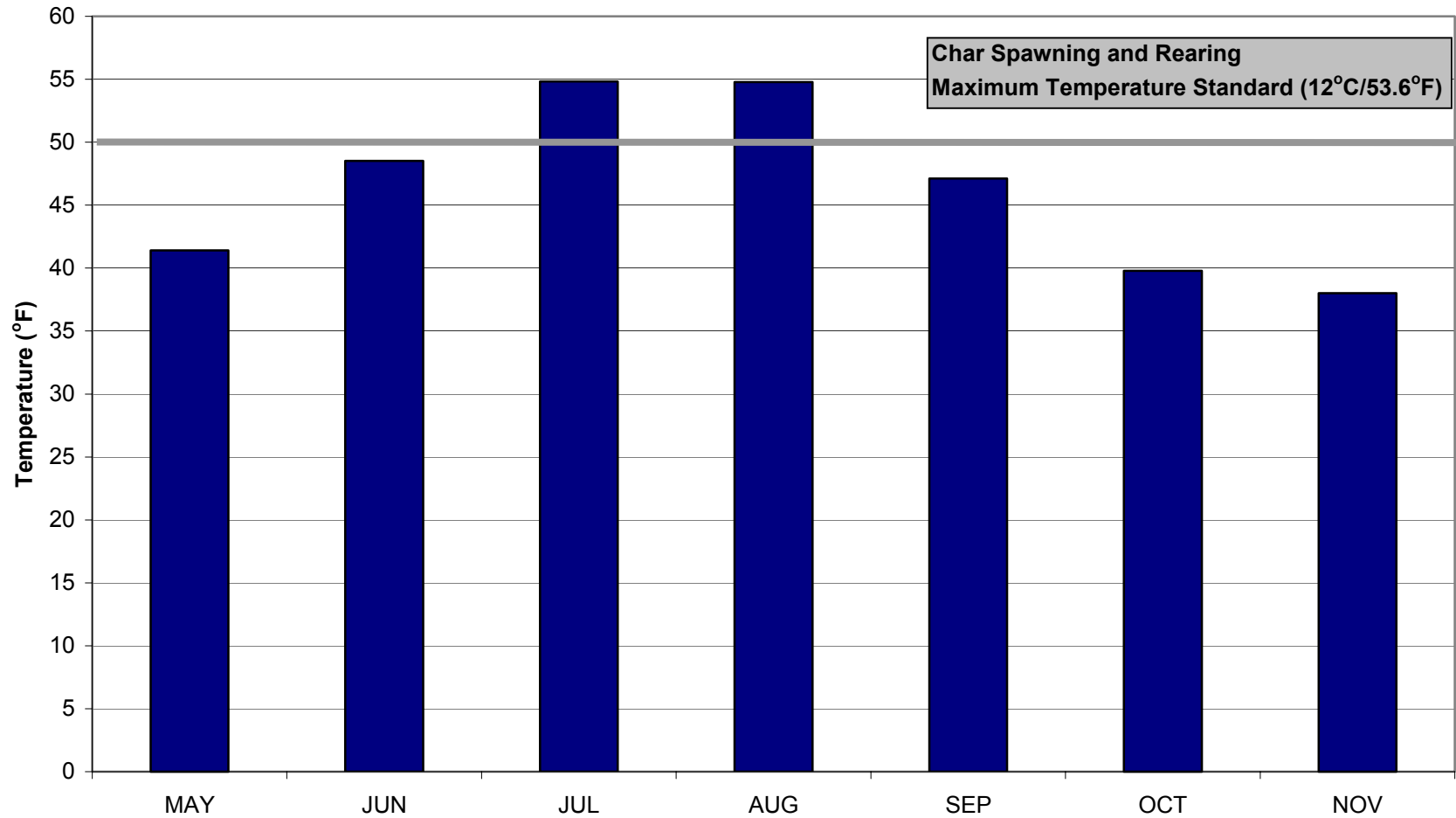
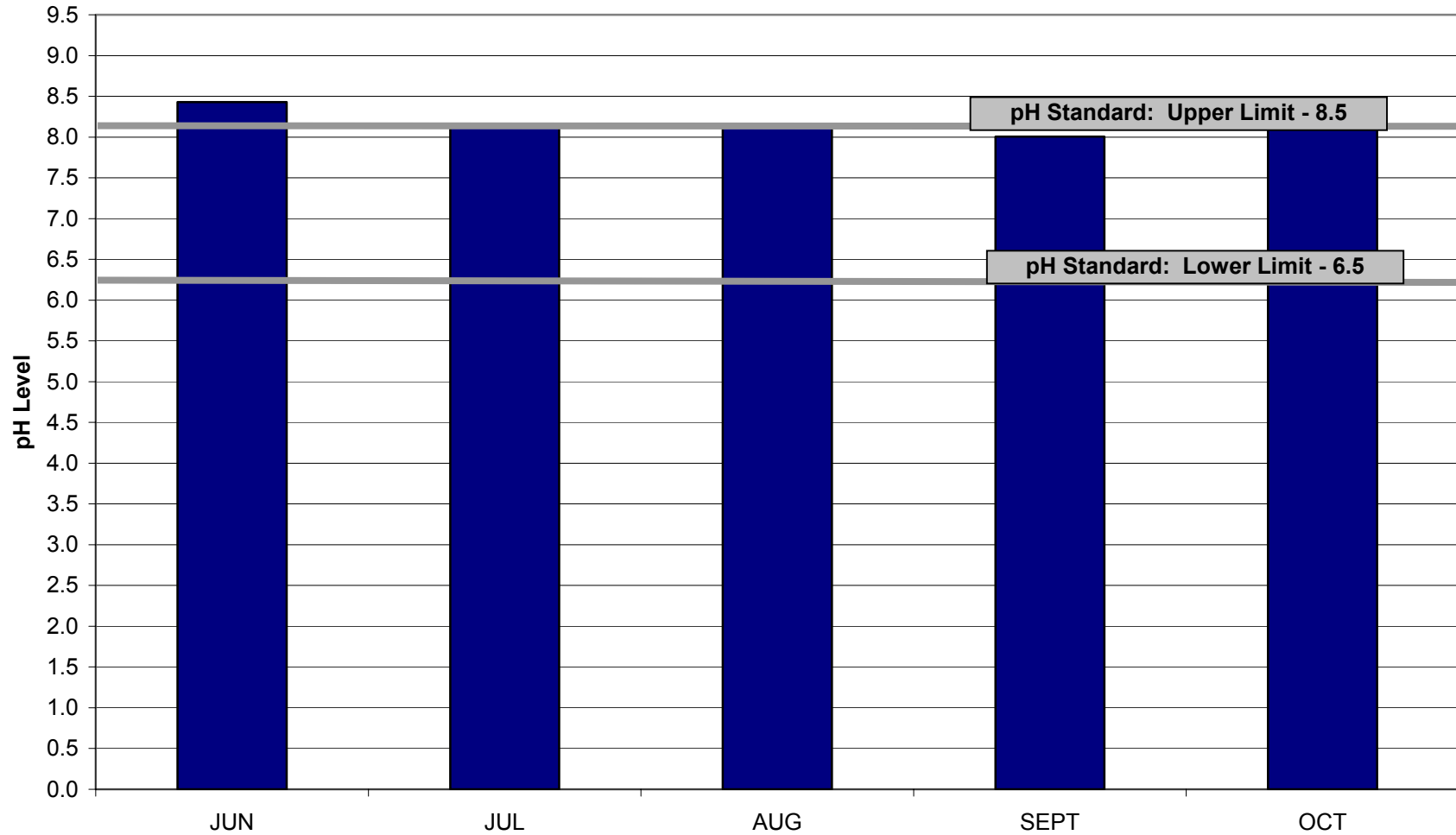


Exhibit 3-5.27

**Geometric Mean of pH Monitoring in Charley Creek
USFS 113FORS6 14020001: June - October, 1973**



**Geometric Mean of Total Suspended Solid Monitoring in Charley Creek
USFS 113FORS6 14020001: 1975 - 1998**

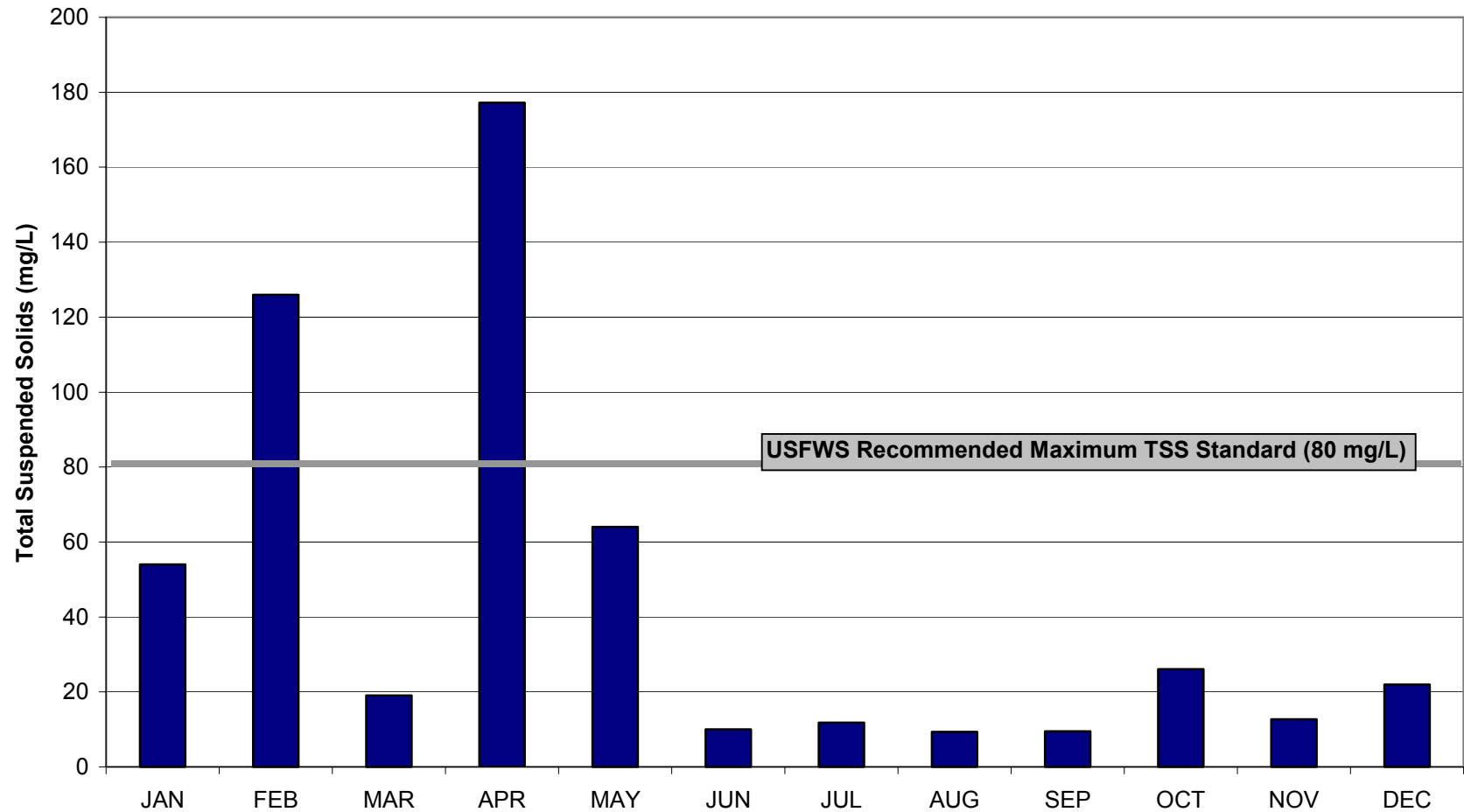
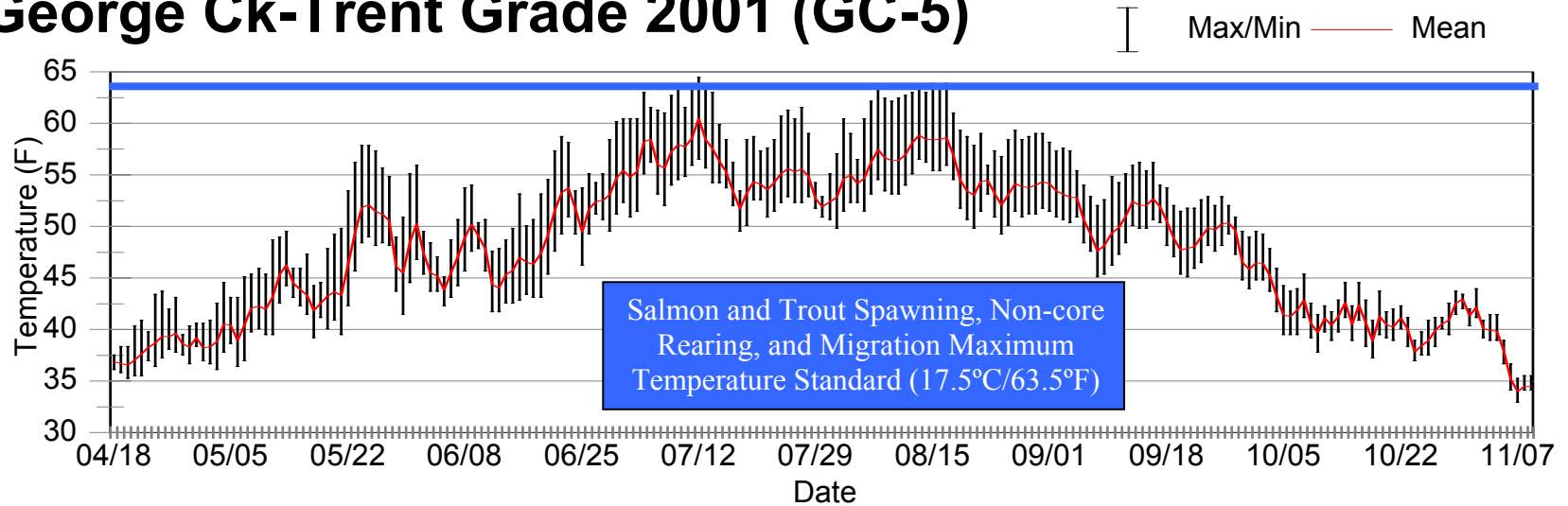


Exhibit 3-5.29
2001 Water Temperature Monitoring in George Creek at Trent Grade
WDFW Monitoring Station

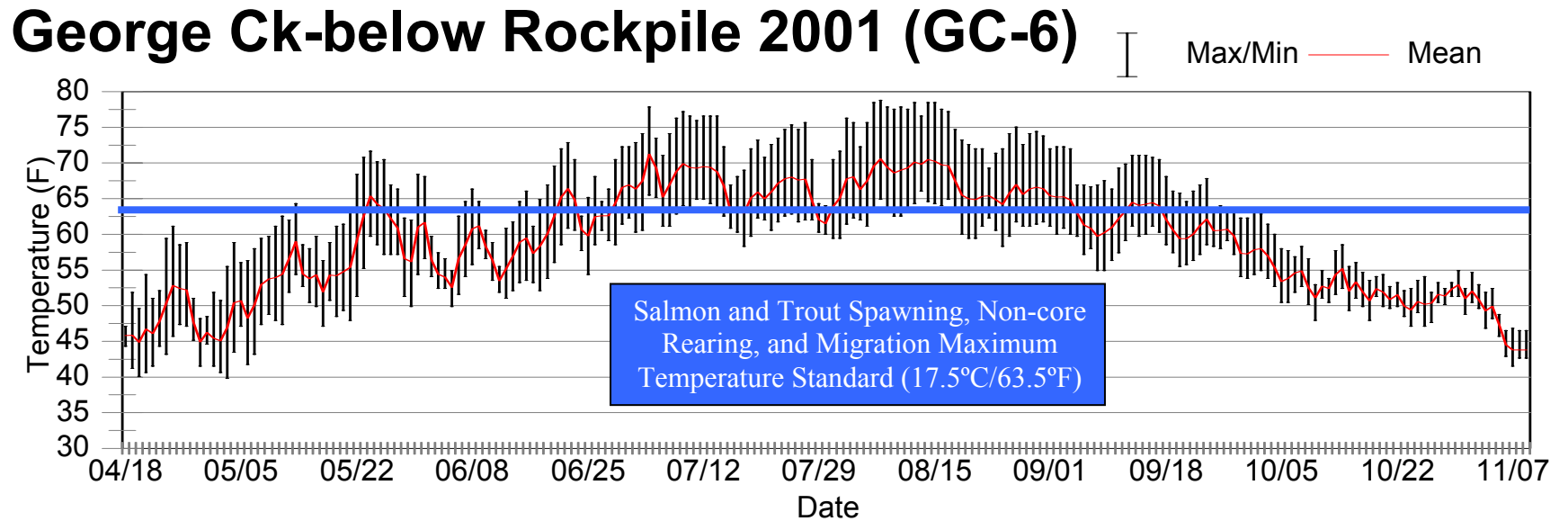
George Ck-Trent Grade 2001 (GC-5)



Source: Brief Assessment of Salmonids and Stream Habitat Conditions in Snake River Tributaries of Asotin, Whitman and Garfield Counties in Washington, March 2001 – June 2003 – Final Report, Appendix C (Mendel et. al. 2004).

Exhibit 3-5.30

2001 Water Temperature Monitoring in George Creek below Rockpile Gulch
WDFW Monitoring Station

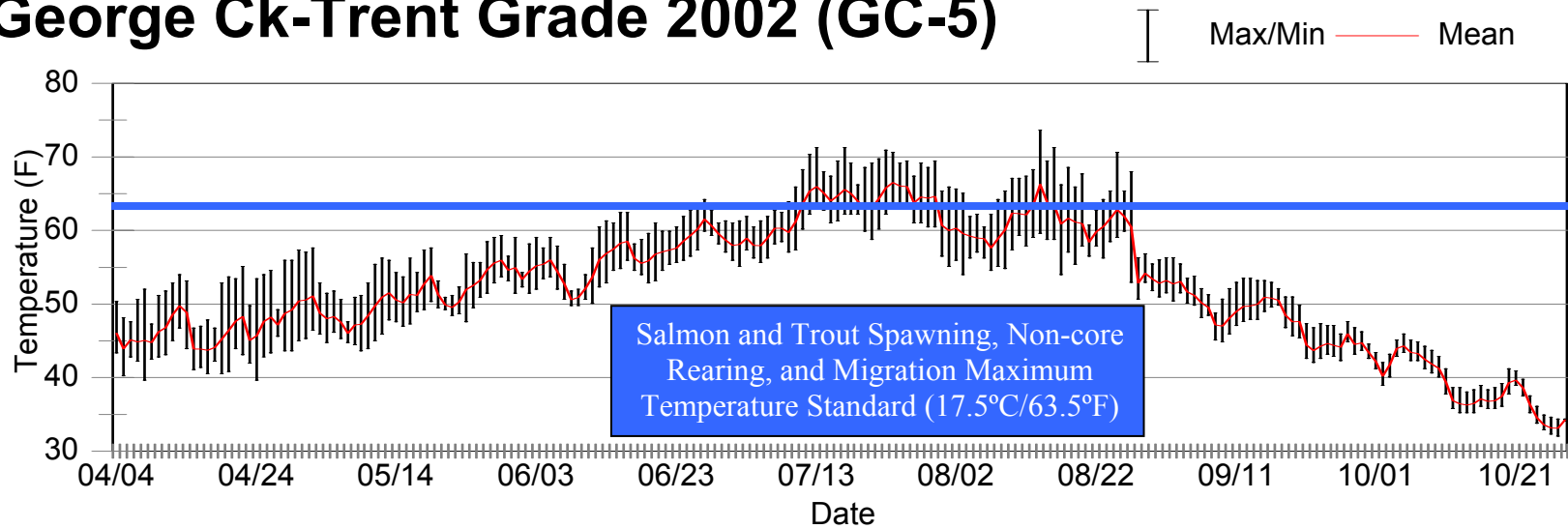


Source: Brief Assessment of Salmonids and Stream Habitat Conditions in Snake River Tributaries of Asotin, Whitman and Garfield Counties in Washington, March 2001 – June 2003 – Final Report, Appendix C (Mendel et. al. 2004).

Exhibit 3-5.31

2002 Water Temperature Monitoring in George Creek at Trent Grade
WDFW Monitoring Station

George Ck-Trent Grade 2002 (GC-5)

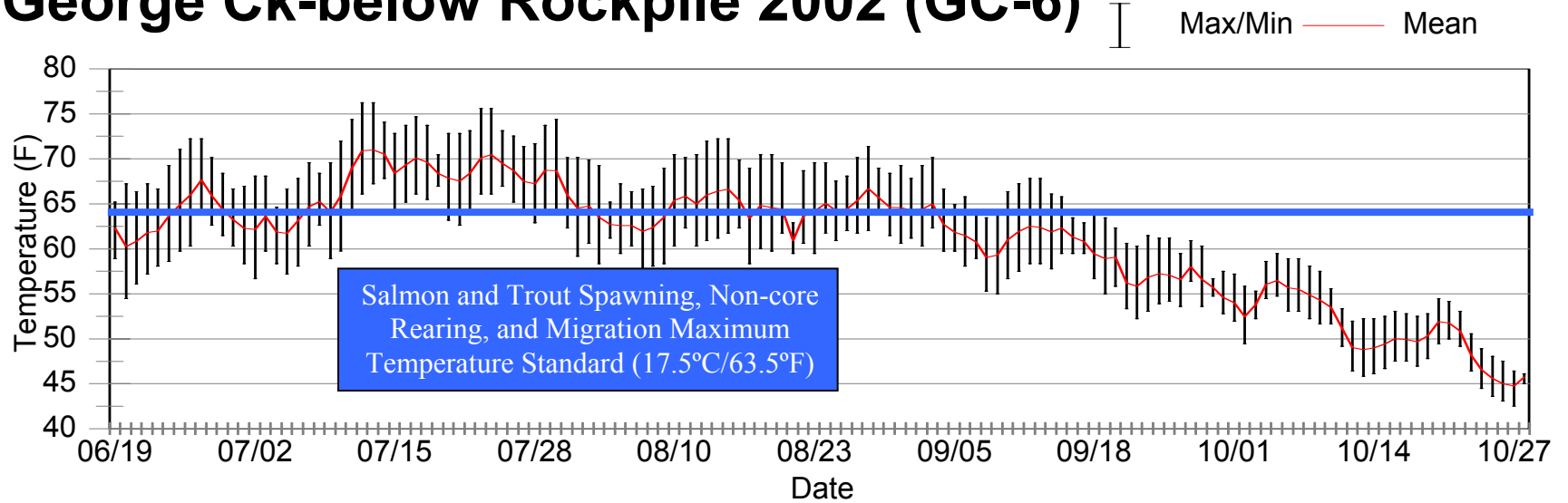


Source: Brief Assessment of Salmonids and Stream Habitat Conditions in Snake River Tributaries of Asotin, Whitman and Garfield Counties in Washington, March 2001 – June 2003 – Final Report, Appendix C (Mendel et. al. 2004).

Exhibit 3-5.32

2002 Water Temperature Monitoring in George Creek below Rockpile Gulch
WDFW Monitoring Station

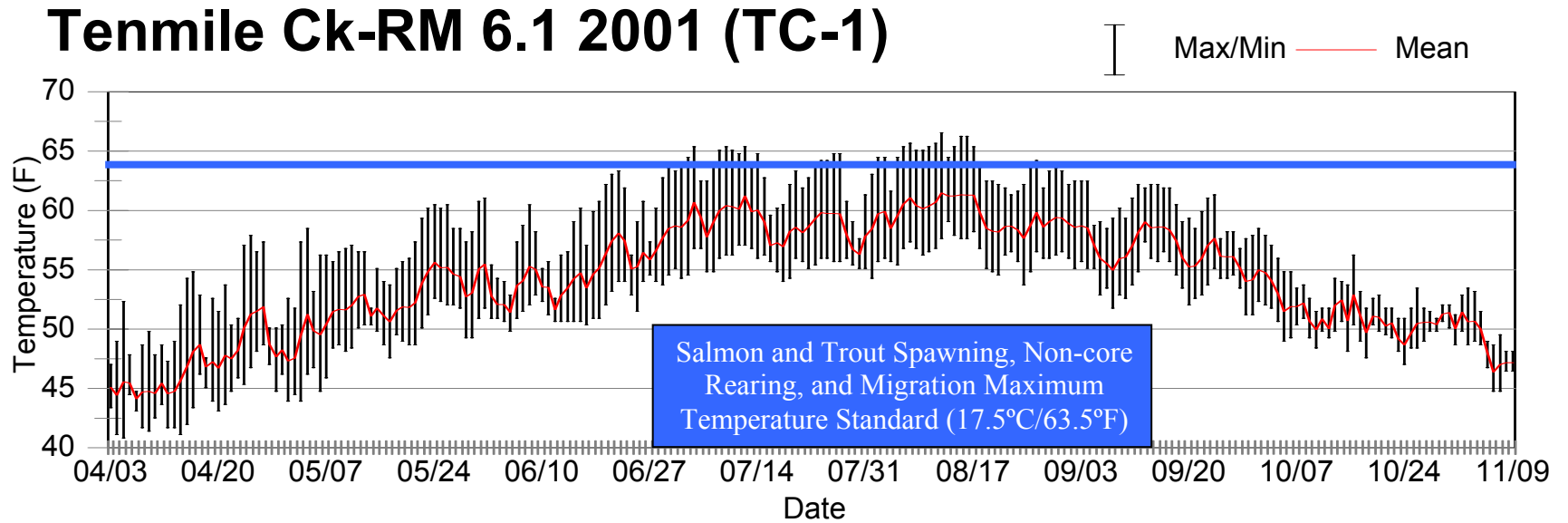
George Ck-below Rockpile 2002 (GC-6)



Source: Brief Assessment of Salmonids and Stream Habitat Conditions in Snake River Tributaries of Asotin, Whitman and Garfield Counties in Washington, March 2001 – June 2003 – Final Report, Appendix C (Mendel et. al. 2004).

Exhibit 3-5.33

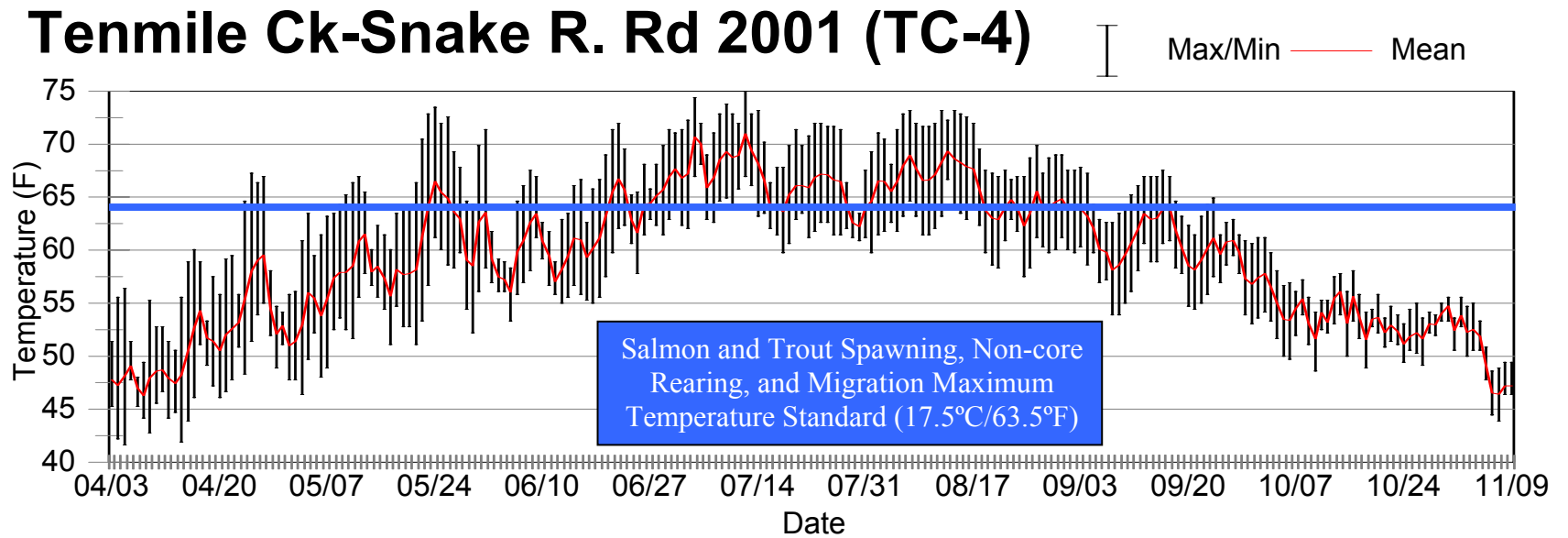
2001 Water Temperature Monitoring in Tenmile Creek at RM 6.1
WDFW Monitoring Station



Source: Brief Assessment of Salmonids and Stream Habitat Conditions in Snake River Tributaries of Asotin, Whitman and Garfield Counties in Washington, March 2001 – June 2003 – Final Report, Appendix C (Mendel et. al. 2004).

Exhibit 3-5.34

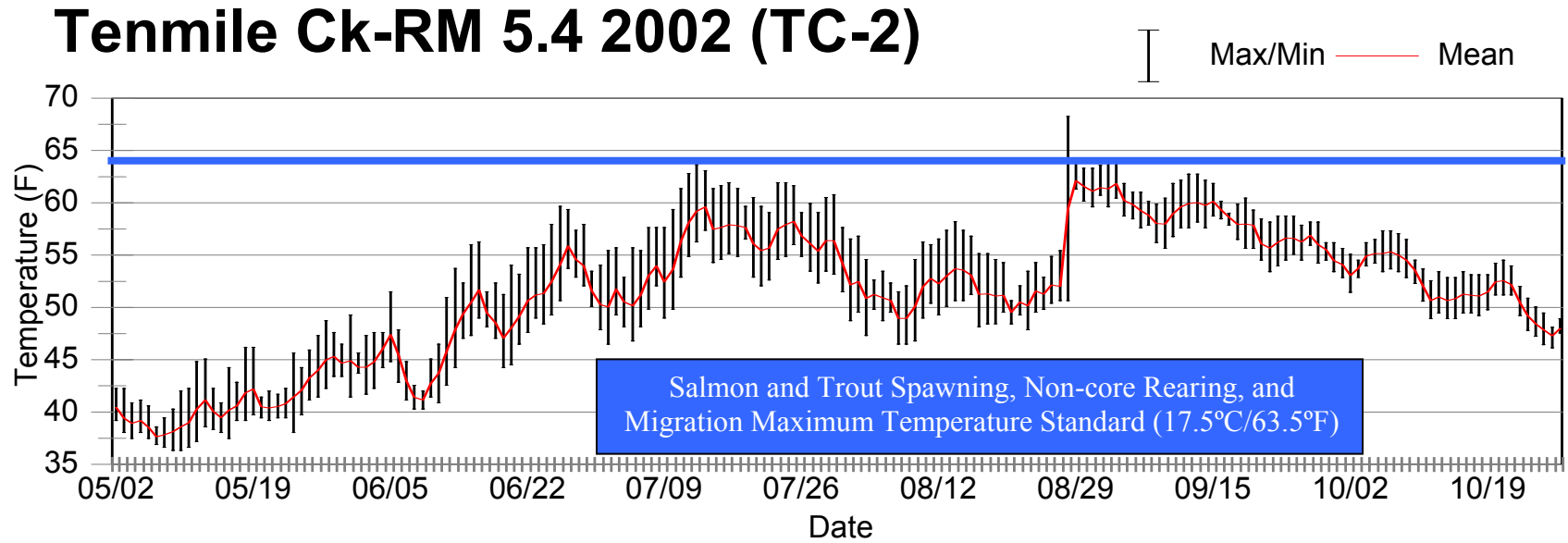
2001 Water Temperature Monitoring in Tenmile Creek at Snake River Road
WDFW Monitoring Station



Source: Brief Assessment of Salmonids and Stream Habitat Conditions in Snake River Tributaries of Asotin, Whitman and Garfield Counties in Washington, March 2001 – June 2003 – Final Report, Appendix C (Mendel et. al. 2004).

Exhibit 3-5.35

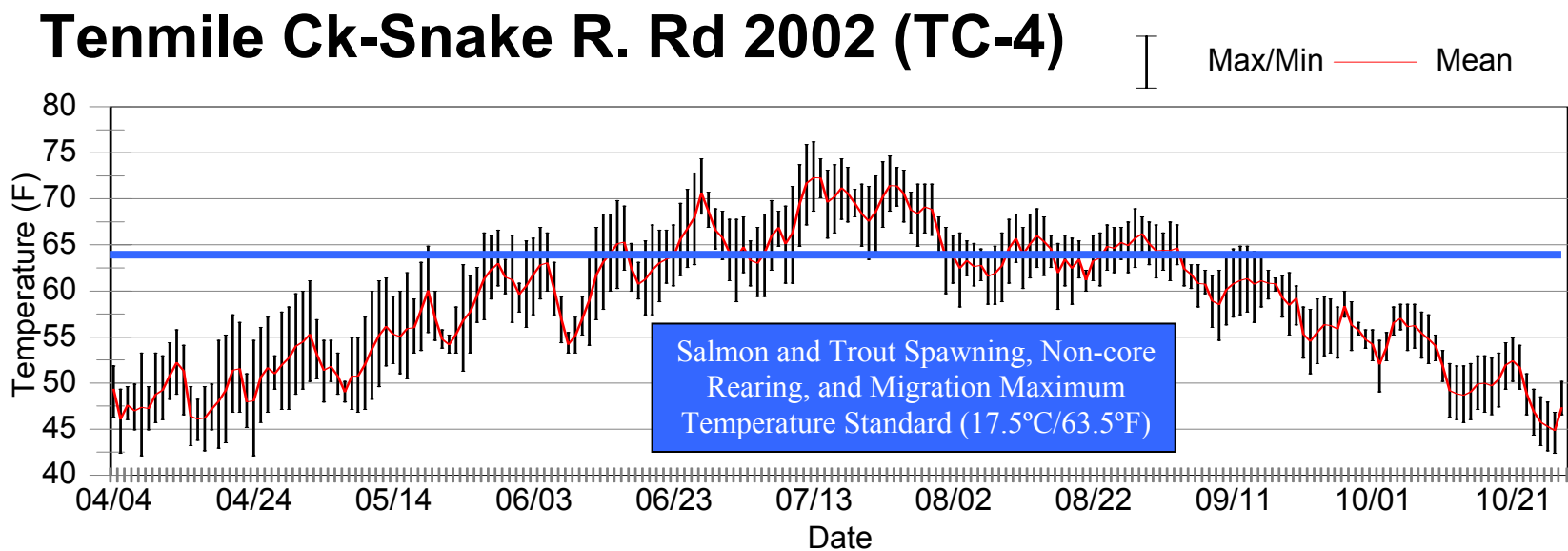
2002 Water Temperature Monitoring in Tenmile Creek at RM 5.4
WDFW Monitoring Station



Source: Brief Assessment of Salmonids and Stream Habitat Conditions in Snake River Tributaries of Asotin, Whitman and Garfield Counties in Washington, March 2001 – June 2003 – Final Report, Appendix C (Mendel et. al. 2004).

Exhibit 3-5.36

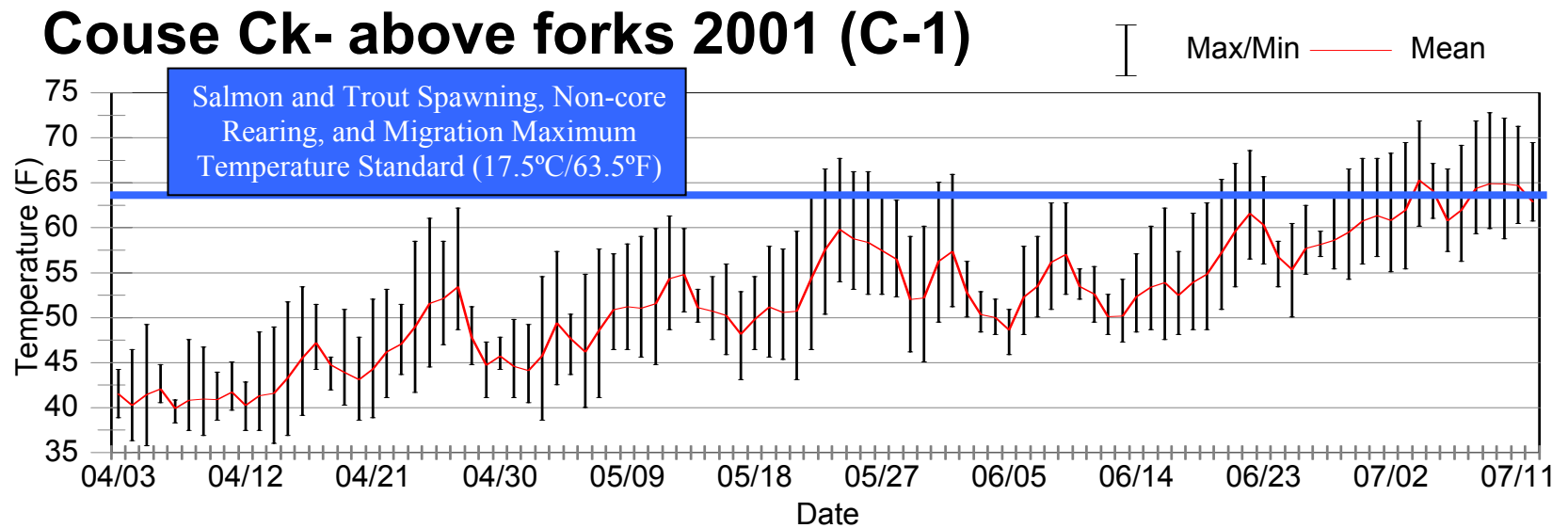
2002 Water Temperature Monitoring in Tenmile Creek at Snake River Road
WDFW Monitoring Station



Source: Brief Assessment of Salmonids and Stream Habitat Conditions in Snake River Tributaries of Asotin, Whitman and Garfield Counties in Washington, March 2001 – June 2003 – Final Report, Appendix C (Mendel et. al. 2004).

Exhibit 3-5.37

2001 Water Temperature Monitoring in Couse Creek above Forks
WDFW Monitoring Station

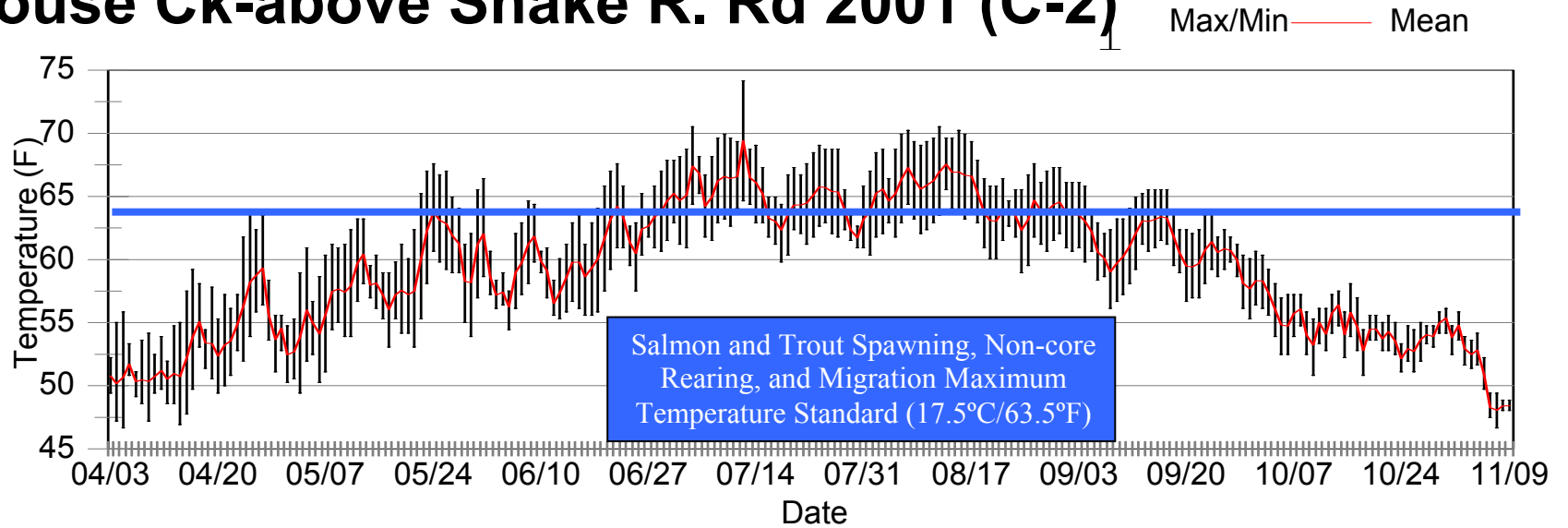


Source: Brief Assessment of Salmonids and Stream Habitat Conditions in Snake River Tributaries of Asotin, Whitman and Garfield Counties in Washington, March 2001 – June 2003 – Final Report, Appendix C (Mendel et. al. 2004).

Exhibit 3-5.38

2001 Water Temperature Monitoring in Couse Creek above Snake River Road
WDFW Monitoring Station

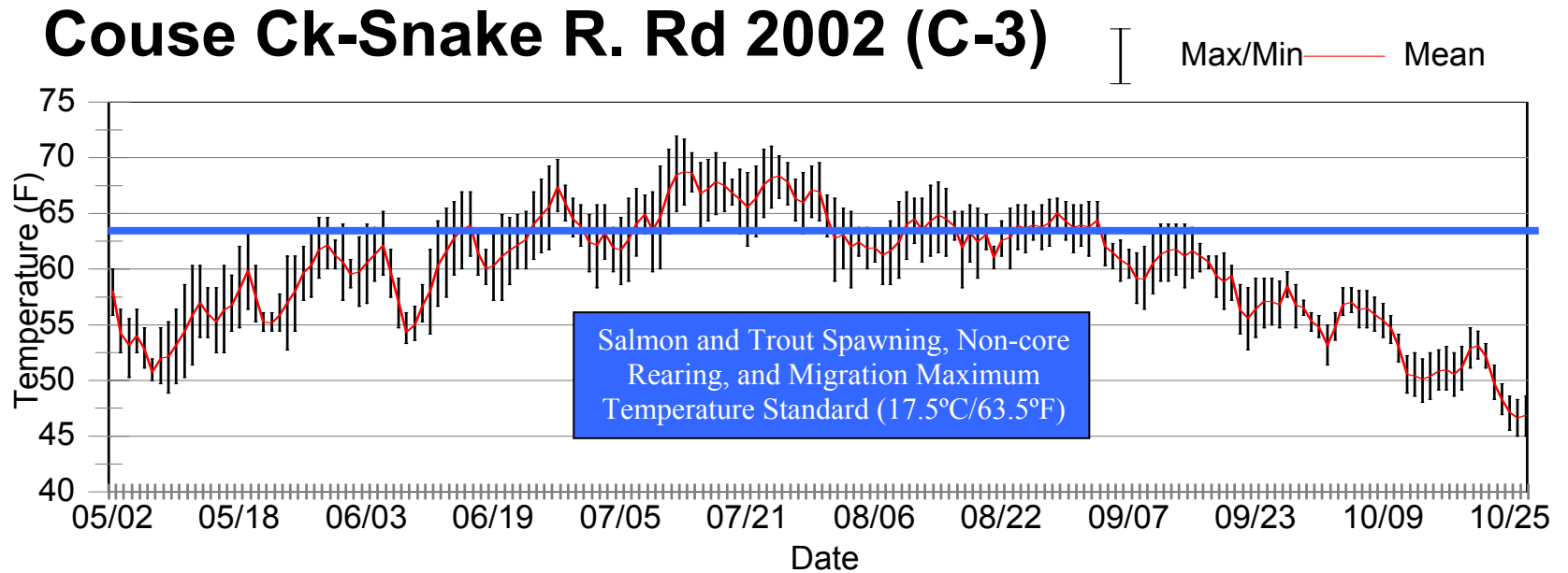
Couse Ck-above Snake R. Rd 2001 (C-2)



Source: Brief Assessment of Salmonids and Stream Habitat Conditions in Snake River Tributaries of Asotin, Whitman and Garfield Counties in Washington, March 2001 – June 2003 – Final Report, Appendix C (Mendel et. al. 2004).

Exhibit 3-5.39

2002 Water Temperature Monitoring in Couse Creek at Snake River Road
WDFW Monitoring Station



Source: Brief Assessment of Salmonids and Stream Habitat Conditions in Snake River Tributaries of Asotin, Whitman and Garfield Counties in Washington, March 2001 – June 2003 – Final Report, Appendix C (Mendel et. al. 2004).